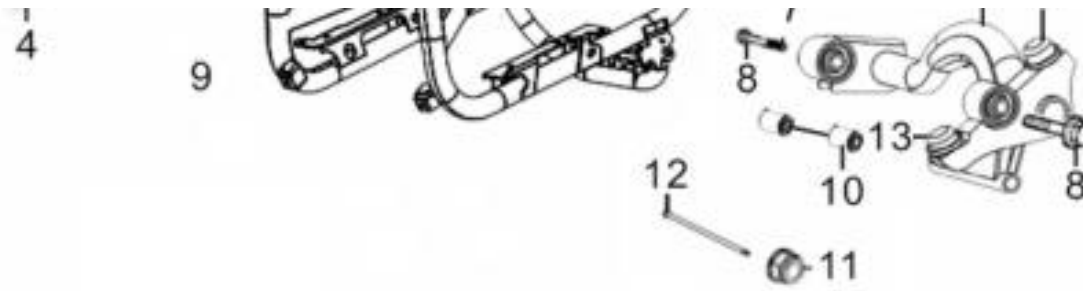


Part List 150XH



FRAME BODY

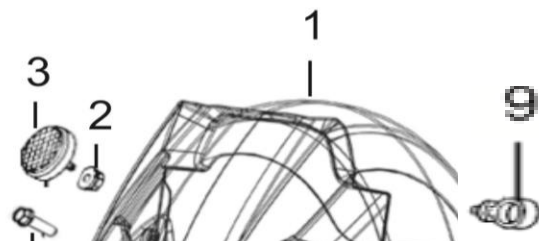


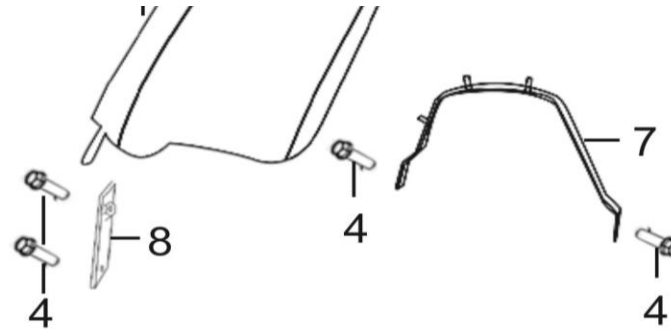
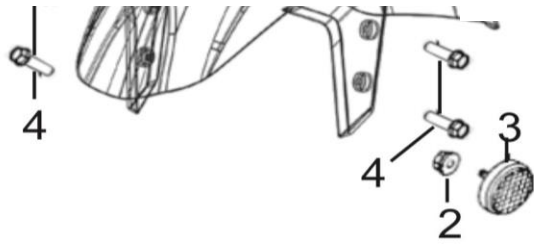


Code	NO.	DESCRIPTION	QTY	Amount	NOTE
0310000.T10K.04	1	FRAME BODY	1		
0110009.T10K	2	BRACKET,COVER FR	1		
GB5789.08025.06	3	BOLT FLANGE M8×25	2		price for per pc
GB5789.08020.06	4	BOLT FLANGE M8×20	1		price for per pc
1326000.T09K	5	BAR R STEP ASSY	1		
1325000.T09K	6	BAR A STEP ASSY	1		
1323200.T09K	7	PIN SPLIT 1.6*15	2		
GB5789.10055.06	8	BOLT FLANGE 10*55	2		
0333000.T09K	9	HANGER OF ENGINE	1		
0333001.T09K	10	BUSH SWING LOCK	2		
GB6187.1.10.06	11	NUT FLANGE 10MM	3		
1410048.T09K	12	FLANGE BOLT M10×1.25×185	1		
0333003.T09K	13	RUBBER STOPPER	2		

1

FENDER

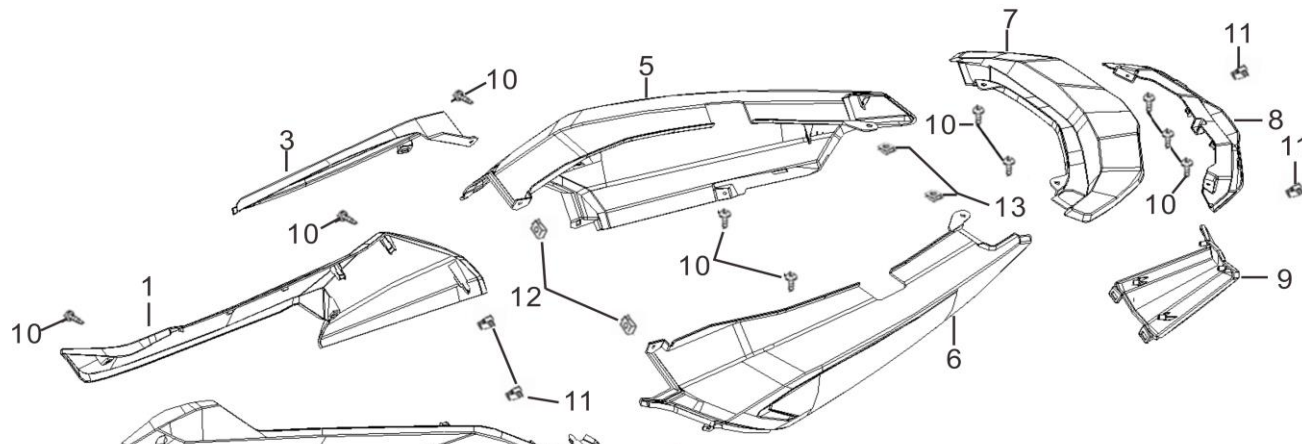




Code	NO.	DESCRIPTION	QTY	Amount	NOTE
0110037.T09K	1	FRONT FENDER,ABS	1		abs,painted
GB6177.1.06.06	2	NUT 6M M	2		
0260001.T09J.01	3	REFLEX REFLECTOR SIDE	2		
GB5789.06016.07	4	BOLT FLANGE M6×16	8		
0130027.T09K	5	FENDER RR TIRE	1		
GB923.06.11	6	NUT (H EX) CAP 6M M	4		
0346002.T09K	7	BRACKET,FENDER RR TIRE	1		
0346004.T09K	8	RIGHT BRACKET,FENDER RR TIRE	1		
1430019.T09K	9	GROMMET WIRE	1		

2

BODY COVER

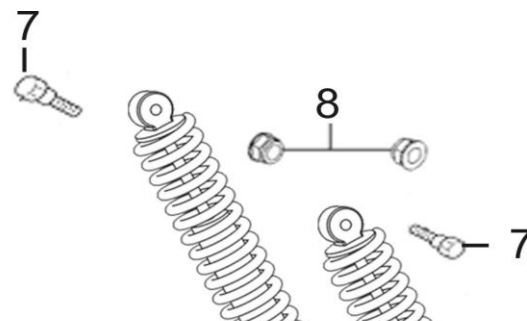


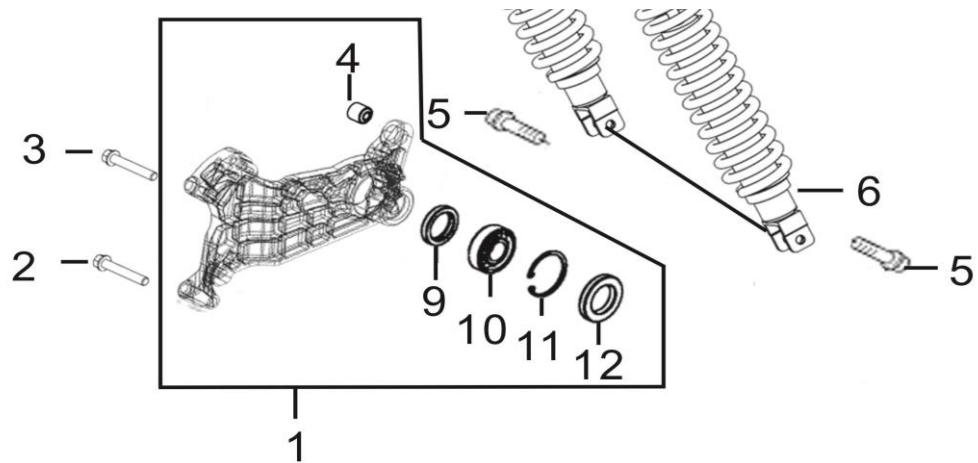


Code	NO.	DESCRIPTION	QTY	Amount	NOTE
0120014.T10K	1	COVER R SIDE,ABS	1		abs,painted
0120013.T10K	2	COVER L SIDE,ABS	1		abs,painted
0120016.T10K	3	COVER R SIDE UPPER COVER ,ABS	1		abs,painted
0120015.T10K	4	COVER L SIDE UPPER COVER ,ABS	1		abs,painted
0130002.T10K	5	COVER SET R BODY,ABS	1		abs,painted
0130001.T10K	6	COVER SET L BODY,ABS	1		abs,painted
0130015.T10K	7.1	COVER RR CENTER,ABS	1		abs,painted
0130015.T10K.01	7.2	COVER RR CENTER,ABS,for back rest	1		abs,painted
0130019.T10K	8	COVER RR CENTER LOWER COVER	1		
0130016.T10K	9	REAR TAIL LIGHT INTERMEDIATE COVER	1		abs,painted
GB845.48016.06	10	SCREW TAPPING 4*12 (K)	16		
1430001.T09K	11	BUCKLE	4		
Q397.42.06	12	NUT SPRING 4MM	4		
Q312.06.06	13	NUT SPRING 6MM	2		

3

REAR SHOCK ABSORBER



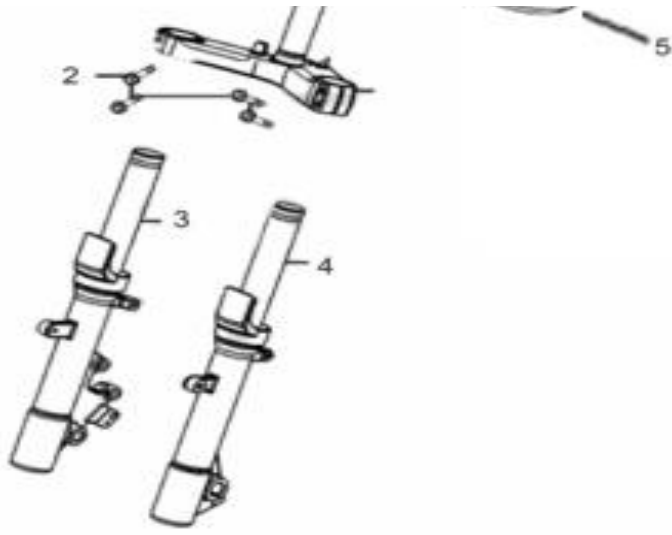


Code	NO.	DESCRIPTION	QTY	Amount	NOTE
0342000.T09K	1	RR.ARM COMP.	1		
GB5789.08070.06	2	BOLT FLANGE M8×70	1		
GB5789.08060.06	3	BOLT FLANGE M8×60	1		
0342003.T09K	4	buffer sleeve for connecting plate	1		
GB5789.08040.06	5	BOLT FLANGE M8×40	2		
0420000.T09K	6	CUSHION ASSY., R R .	2		
GB5789.10040.06	7	BOLT HEX	2		
1410056a.G01S	8	NUT 10M M	2		
0342001.T09K	9	INNER SPACER	1		
0342004.T09K	10	BEARING,ARM	2		
GB893.1.040	11	RING	1		
0342002.T09K	12	OUTER SPACER	1		

4

FRONT FORK

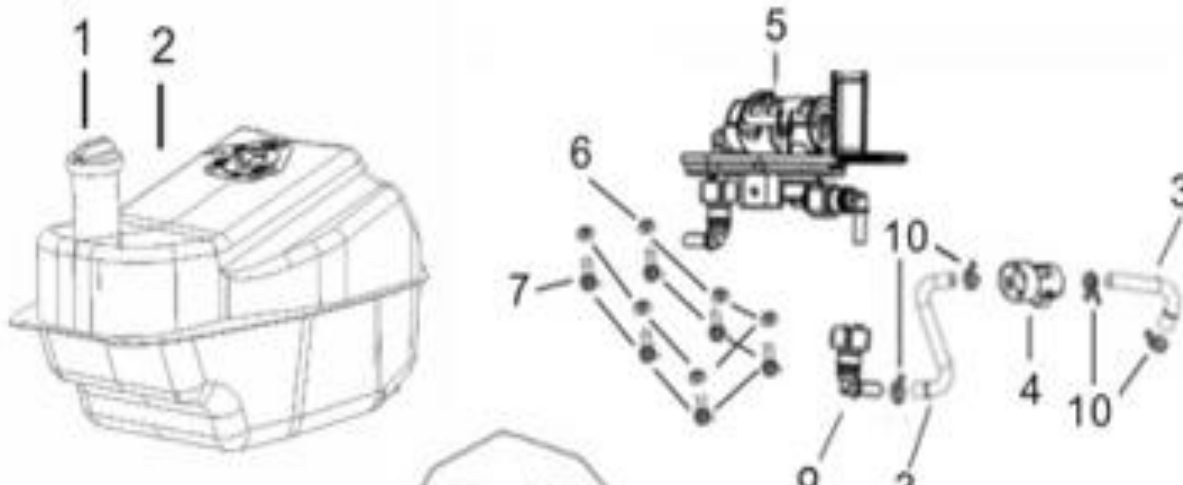


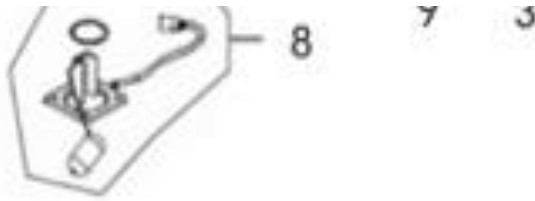


Code	NO.	DESCRIPTION	QTY	Amount	NOTE
0324000.T10K	1	STEM COMP., STRG	1		
GB5789.08045.06	2	BOLT FLANGE M8×45	4		
0412000.T10K	3	R.FR.FORK ASSY.	1		
0411000.T10K	4	L.FR.FORK ASSY.	1		
1421000.T09K	5	TOP NUT,STEERING STEM	2		

5

FUEL TANK

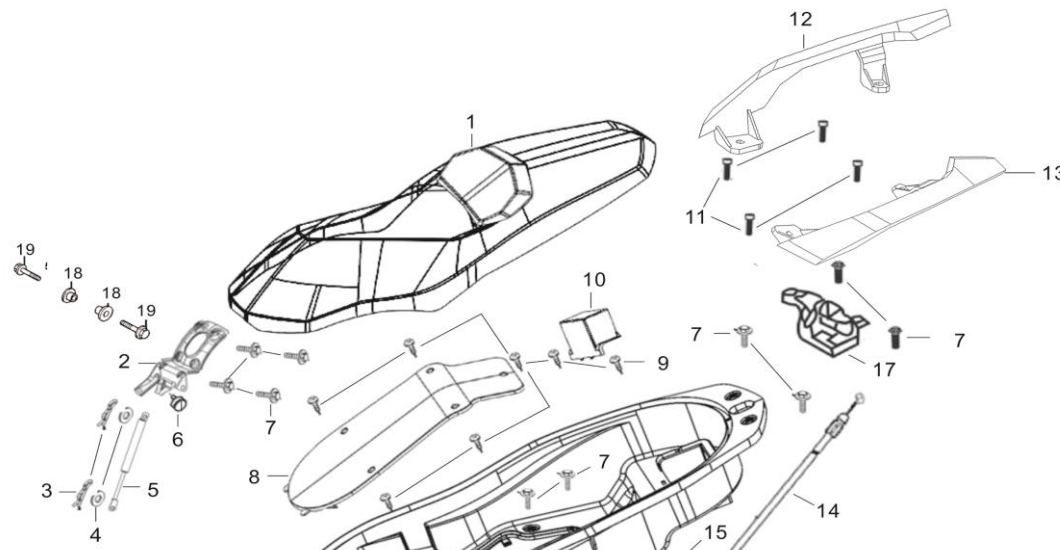


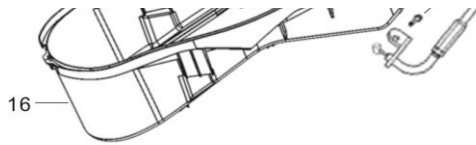


Code	NO.	DESCRIPTION	QTY	Amount	NOTE
1011001.T09K	1	CAP SET FILLER	1		
1011000.T09K	2	FUEL TANK	1		
1020002.T09K	3	FUEL TUBE	2		
1020003.T09K	4	STRAINER ASSY FUEL	1		
1013000.T09K	5	FUEL PUMP ASSY	1		
1430060.T09K	6	Fuel pump seal	6		
GB5789.06020.06	7	BOLT FLANGE M6×20	6		
1012000.T09K	8	FUEL SENSOR ASSY	1		
1020004.T09K	9	QUICK CONNECTOR	1		
1020008.T09K	10	FUEL TUBE CLAMP	4		

6

SEAT ASSY





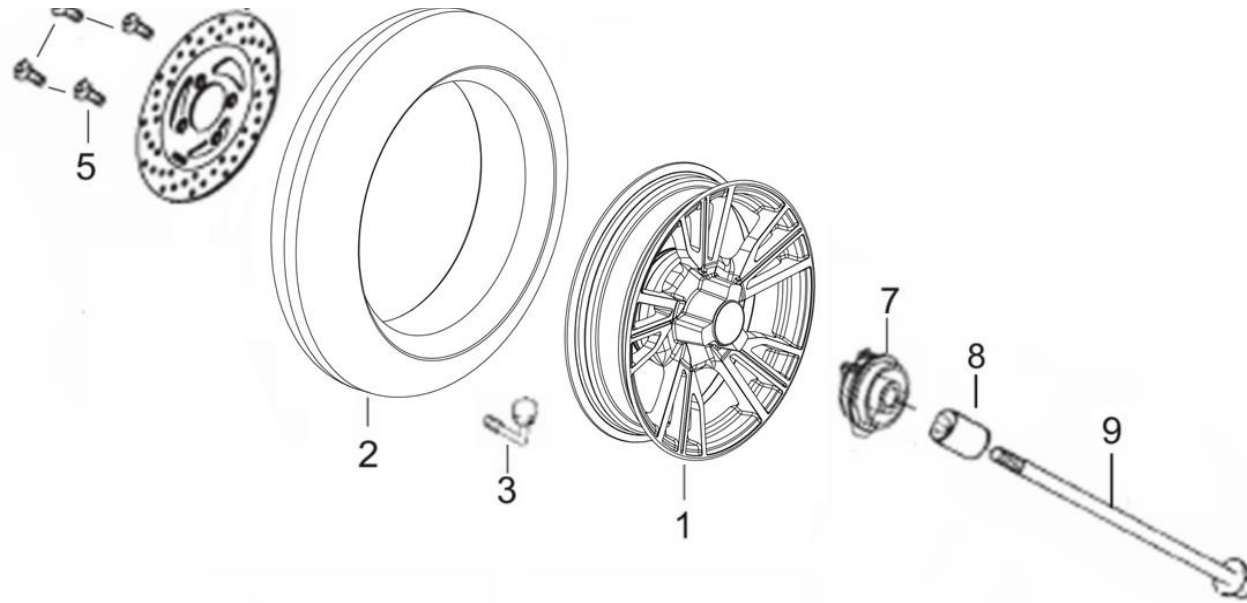
Code	NO.	DESCRIPTION	QTY	Amount	NOTE
0151000.T10K.02	1	SEAT	1		
0351000.T09K	2	HINGE ASSY SEAT	1		
1410035.T09K	3	PIN LOCK 8M M	2		
GB96.08018.06	4	WASH PLAIN 8MM	2		
0350015.T09K	5	BRACING PIECE FOR SEAT	1		
0333003.T09K	6	RUBBER STOPPER A	1		
GB5789.06012.06	7	BOLT FLANGE M6×12	8		
0140002.T09K	8	LID CARB MAINT	1		
GB845.48016.06	9	SCREW TAPPING 4*12 (K)	7		
0120026.T10K.01	10	COVER BATTERY, could used on EURO 4	1		
GB5789.08025.06	11	BOLT FLANGE M8×25	4		
1311002.T10K	12	REAR GRIP R	1		nylon,painted
1311001.T10K	13	REAR GRIP L	1		nylon,painted
0940002.T10K	14	CABLE OF SEAT LOCK	1		
GB823.05008.06	15	SCREW SPECIAL	1		
0140001.T09K.02	16	LUGGAGE BOX ASSY, could used on euro 4	1		
0353000.T09K	17	LOCK BASE OF SEAT	1		
1410034.T09K	18	COLLAR HINGE ASSY SEAT	2		
GB5789.06020.06	19	BOLT FLANGE M6×20	8		

7

FRONT WHEEL



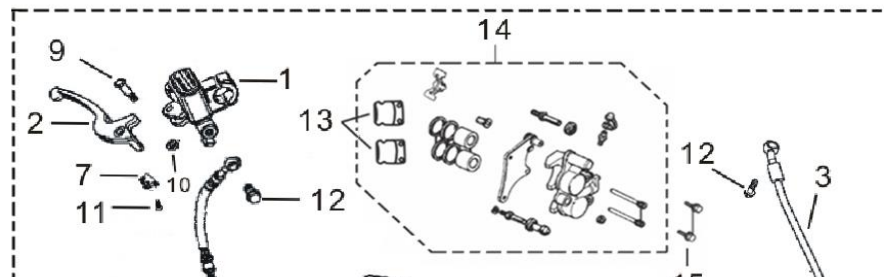
4

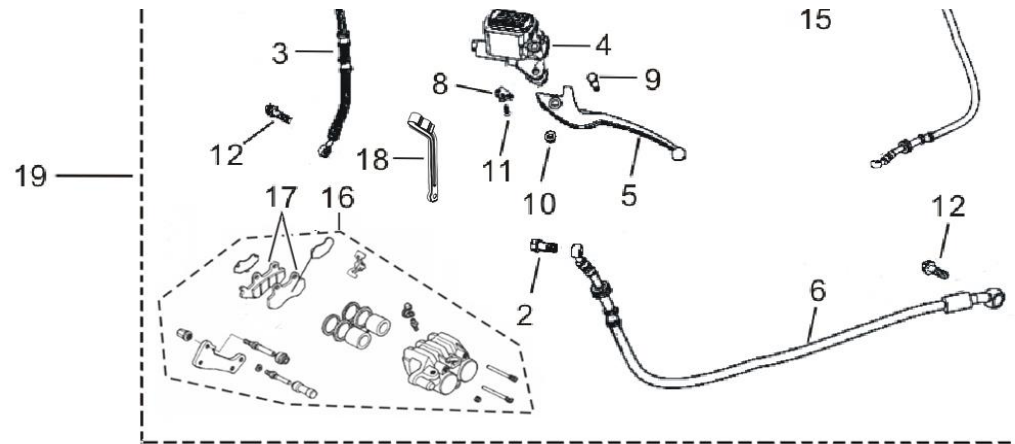


Code	NO.	DESCRIPTION	QTY	Amount	NOTE
0610001.T09K.02	1	FRONT WHEEL	1		
0610002.T09K.02	2	FRONT TIRE	1		120/80-14
0610003.T09K	2	VALVE RIM	1		
0510001.T09K	4	DISK FR BRAKE	1		
1410028.T09K	5	BOLT FR DISK 8*25	3		
1410057.G01S.06	6	NUT U FLANGE	1		
0611000.T09K	7	GEAR BOX ASSY FOR CALCULATE SPEED	1		
1410004.T09K	8	COLLAR RR AXLE	1		
1410001.T09K	9	AXLE FR WHEEL	1		

8

BRAKE SYSTEM



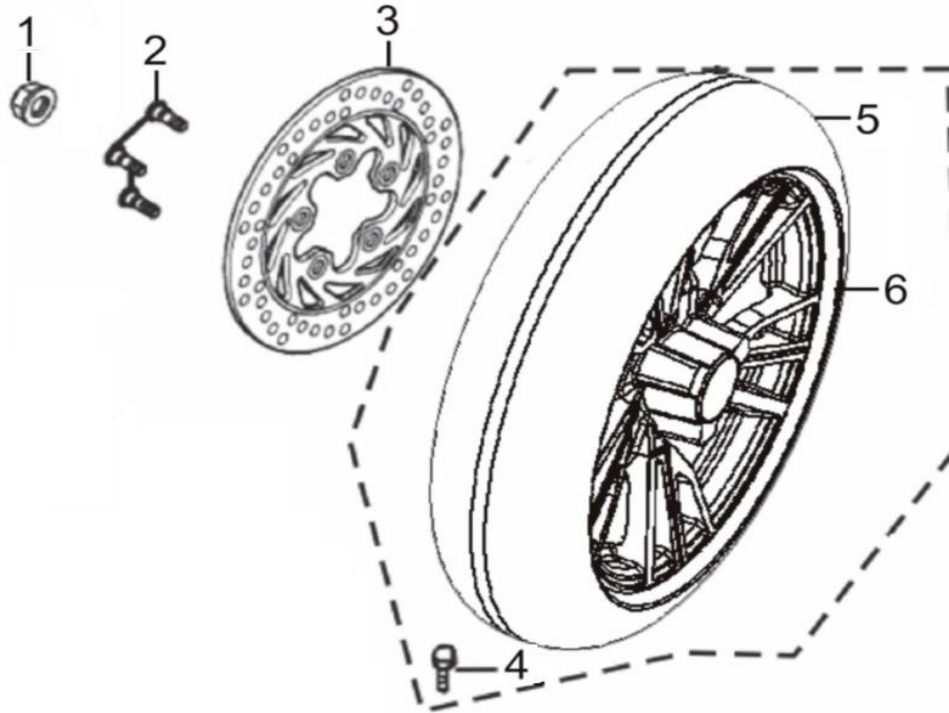


Code	NO.	DESCRIPTION	QTY	Amount	NOTE
0511000.T09K	1	CYLINDER SET FR MASTER	1		
0511001.T09K	2	LEVER R	1		
0511003.T09J	3	HOSE ASSY FR BRAKE	2		
0521000.T09K	4	CYLINDER SET RR MASTER	1		
0521001.T09K	5	LEVER L	1		
0520002.T09K	6	HOSE ASSY RR BRAKE	1		
0511002.T09K	7	SWITCH ASSY FR BRAKE	1		
0521002.T09K	8	SWITCH ASSY RR BRAKE	1		
0511005.T09K	9	BOLT HANDLE LEVER	2		
0511006.T09K	10	FLANGE NUT M6	2		
GB823.05012.06	11	SCREW WASHER M5*12	2		
0510004.T09K	12	OIL BOLT	4		
0512201.T09J	13	RR.BRAKE PAD	1		
0522200.T09K	14	CALIPER ASSY FR	1		
GB5789.10045a	15	BOLT FLANG E	2		
0512200.T09J	16	CALIPER ASSY RR	1		
0512101.T09J	17	PAD SET R	1		
0510003.T09J	18	BRAKE HOSE STAY	1		

0541000.T09K.01	19	CBS assemble (Black handle)	1		
-----------------	----	-----------------------------	---	--	--

9

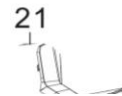
REAR WHEEL

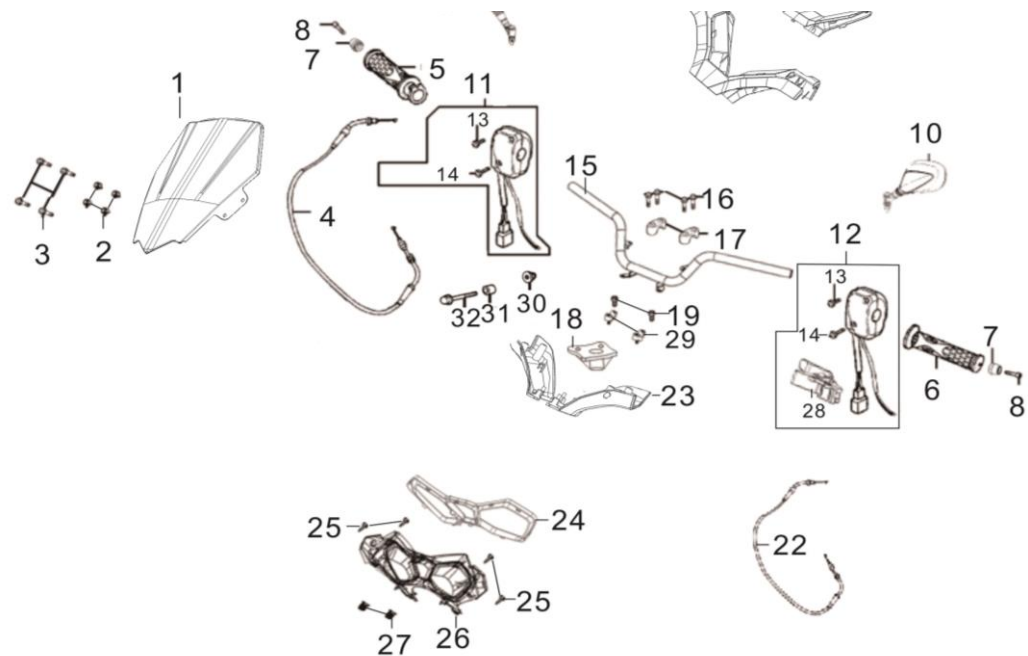


Code	NO.	DESCRIPTION	QTY	Amount	NOTE
1410059.G01S.05	1	NUT U FLANGE	1		
1410029.T09K.06	2	BOLT FR DISK 8*25	3		
0520001.T09K	3	REAR BRAKE DISK	1		
0610003.T09K.01	4	VALVE RIM	1		
0610002.T09K	5	REAR TIRE	1		
0620001.T09K.02	6	REAR RIM	1		

10

HANDLE BAR



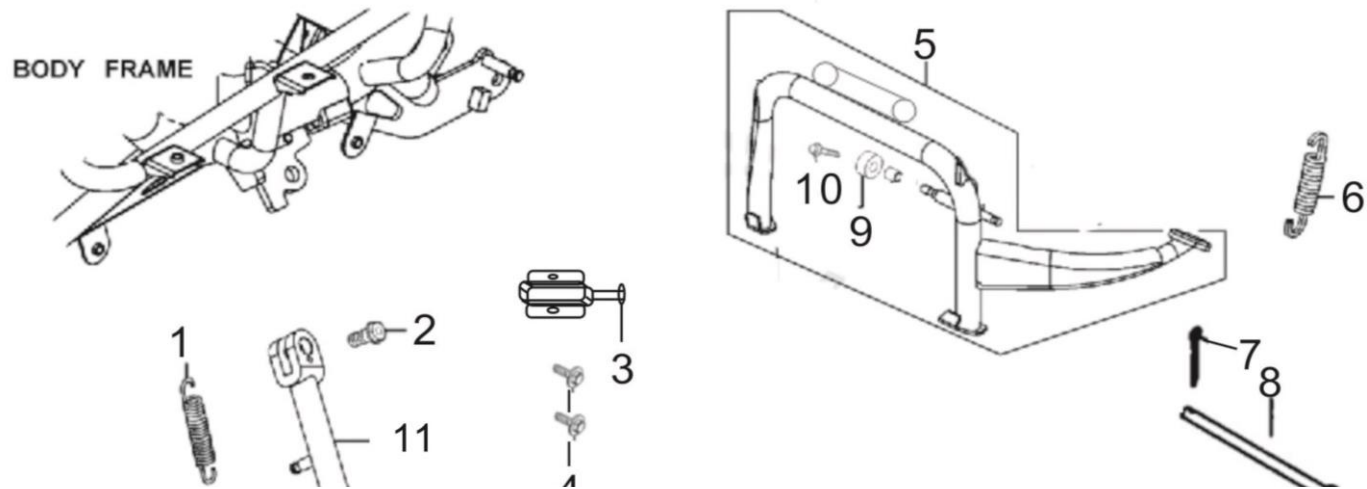


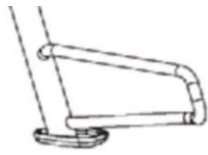
Code	NO.	DESCRIPTION	QTY	Amount	NOTE
0110001.T10K	1	WIND SCREEN	1		
1430020.T09K	2	RUBBER WIND SCREEN	1		
GB823.05020.06	3	BO LT W ASH ER5*20	4		
0910001.T10K.02	4	THROTTLE CABLE	1		
0910004.T09K	5	THROTTLE GRIP,HANDLE	1		
0910003.T09K	6	L.GRIP,HANDLE	1		
0322005.T09K	7	END HANDLE	2		
1421002.T09K	8	BOLT W ASH M 8*60	2		
1512000.T09K.02	9	MIRROR ASSY R BACK	1		
1511000.T09K.02	10	MIRROR ASSY L BACK	1		
0742000.T09K.02	11	SWITCH,HANDLEBAR R.	1		
0741000.T09K.02	12	SWITCH,HANDLEBAR L.	1		
GB823.05016.06	13	SCREW PAN 5*16	1		
GB823.05016.06	14	SCREW PAN 5*16	1		
0322000.T10K.02	15	HANDLE BAR	1		

GB70.1.08030.06	16	BOLT WASH M 8*30	4		
0322007.T09K	17	HOLD ER HANDLE PIPE	2		
0323000.T10K	18	CLIP, BRAKEHO SE(TOP BRIDGE)	1		
GB5783.10045	19	BOLT M10*45	2		
0110013.T10K	20	HANDLE COVER UP	1		
0110017.T10K	21	HANGER OF ENGINE	1		painted
0940001.T09K	22	CABLE COMP RR BRK	1		
0110014.T10K	23	HANDLE COVER LOW	1		
0110008.T10K	24	LID METER COVER,ABS	1		painted
GB845.42016.06	25	SCREW TAPPING 4*16	4		
0110007.T10K	26	COVER METER FR	1		
Q397.42.06	27	NUT SPRING 4MM	2		
0741001.T09K	28	BRKT ASSY L/H HANDLE	1		
0322008.T09K	29	HOLD LOW HANDLE PIPE	2		
1410056.G01S.06	30	NUT 10M	1		
1410037.T09K	31	BUSH,HANDLE BAR	1		
GB5789.10055.06	32	BOLT FLANGE M8-10×55	1		

11

STAND ASSY





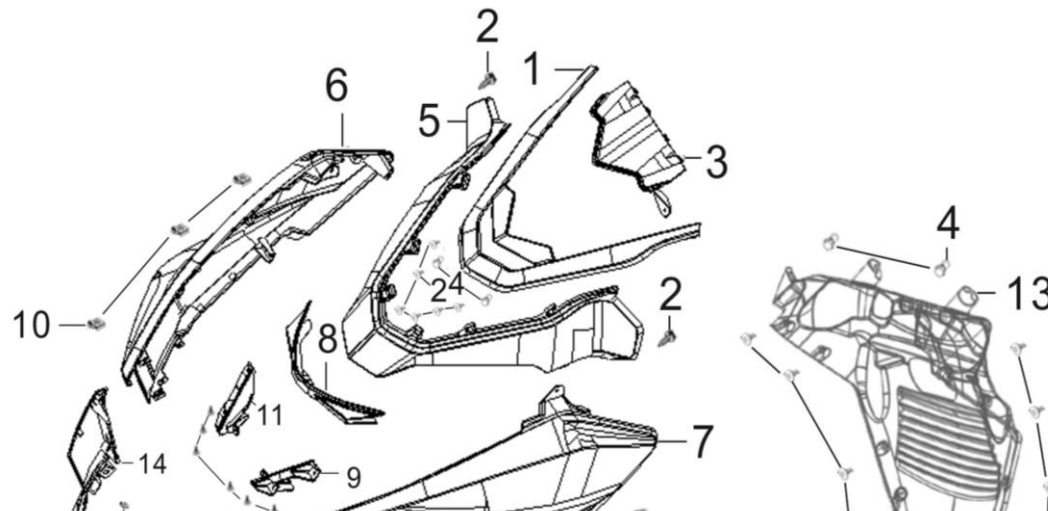
4

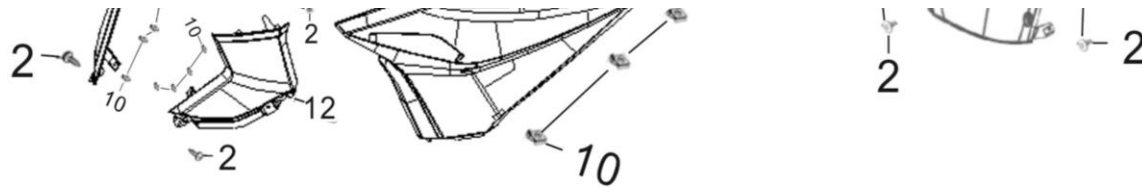
9

Code	NO.	DESCRIPTION	QTY	Amount	NOTE
0350012.T09J.01	1	SPRING OF SIDE STAND	1		
1410013.T09K	2	SCREW SIDE STAND PIVOT	1		
0740004.T09K	3	SWITCH SIDE STAND	1		
GB823.05020.06	4	BOLT WASHER 5*20	2		
0335000.T09K.01	5	STAND ASSY MAIN	1		
0350011.T09J	6	SPRING OF MAIN STAND	1		
GB91.20020	7	PIN LOCK 8M M	1		
1410012.T09K	8	AXLE MIAN STAND	1		
0335100.T09K	9	RUBBER STOPPER MAIN	1		
GB5789.06030.06	10	BOLT FLANGE M6×30	1		
0336000.T09K	11	BAR SIDE STAND	1		

12

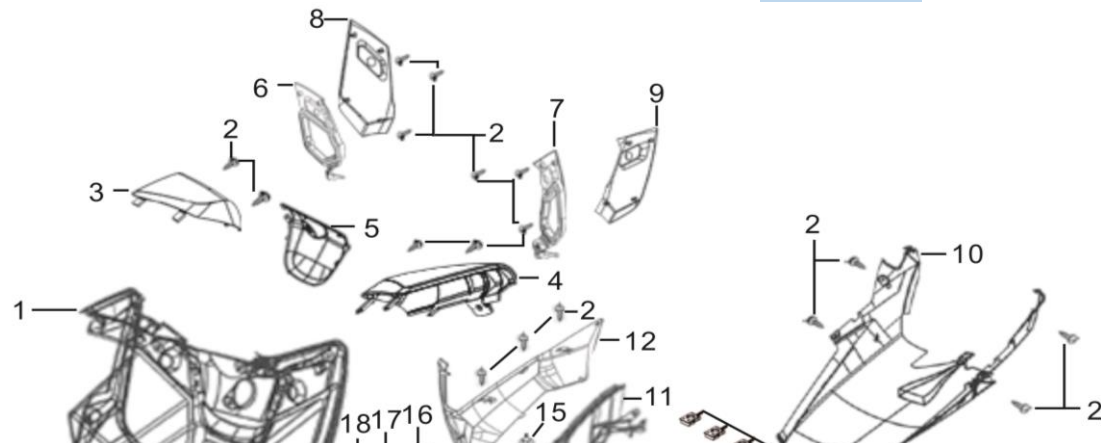
FRONT
VIEW

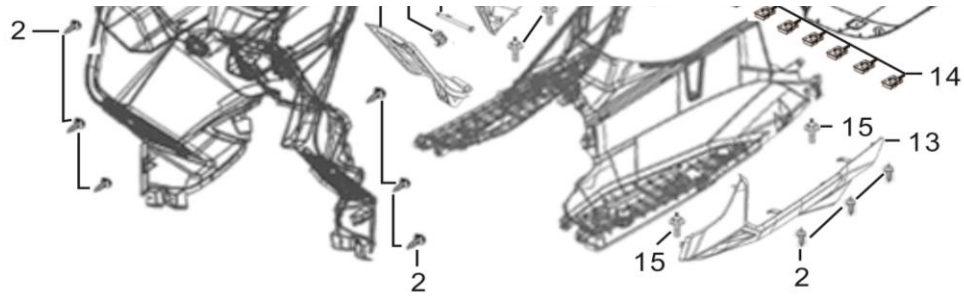




Code	NO.	DESCRIPTION	QTY	Amount	NOTE
0110003.T10K	1	COVER WIND SCREEN,ABS	1		abs, painted
GB845.48016.06	2	SCREW TAPPING 4*12 (K)	18		
0110010.T10K	3	LID BRACKET,COVER FR	1		
GB5789.06012.06	4	BOLT FLANGE M6×12	2		
0110002.T10K	5	COVER FR TO P ,ABS	1		abs, painted
0110028.T10K	6	FRONT COVER R,ABS	1		abs, painted
0110027.T10K	7	FRONT COVER L,ABS	1		abs, painted
0110038.T10K	8	FRONT CENTER COVER,ABS	1		abs, painted
0110029.T10K	9	FRONT LEFT CONNECTOR	1		
Q397.42.06	10	NUT SPRING Φ4.2	12		
0110030.T10K	11	FRONT RIGHT CONNECTOR	1		
0110035.T10K	12	MOLD LEFT FR,ABS	1		abs, painted
0110043.T09K	13	FRONT FENDER INNER	1		
0110036.T10K	14	MOLD RIGHT FR,ABS	1		abs, painted
	13				

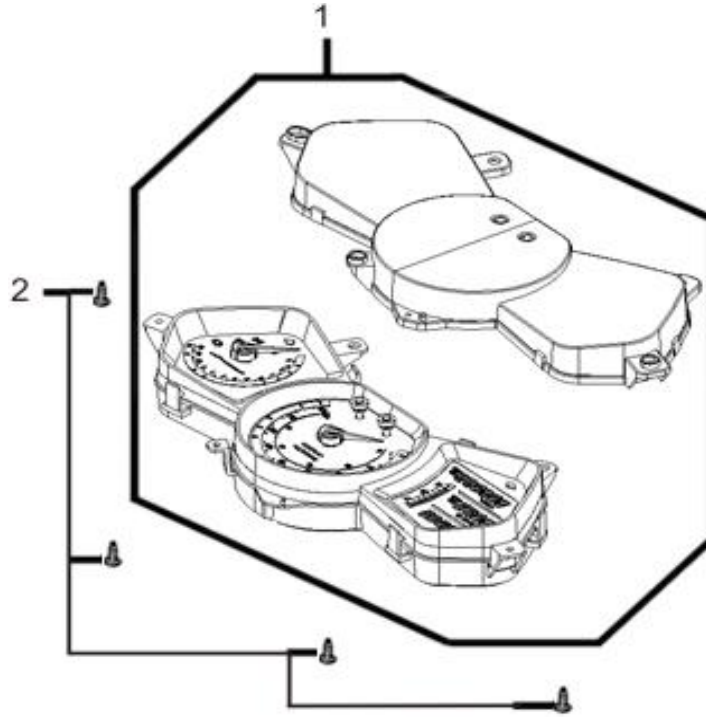
FLOOR PANEL





Code	NO.	DESCRIPTION	QTY	Amount	NOTE
0110019.T10K	1	LEG SHIELD	1		
GB845.48016.06	2	SCREW TAPPING 4*12 (K)	18		
0110022.T09K	3	COVER R LEG SIELD UP	1		
0110021.T09K	4	COVER L LEG SIELD UP	1		
0110020.T10K	5	COVER MIAN LOCK	1		
0110026.T09K	6	COVER R INTER LID FR INTER BOX	1		
0110025.T09K	7	COVER L INTER LID FR INTER BOX	1		
0110024.T09K	8	COVER R OUTER LID FR INTER BOX	1		
0110023.T09K	9	COVER L OUTER LID FR INTER BOX	1		
0120023.T09K	10	COVER UNDER	1		
0120009.T09K	11	PANEL FLOOR	1		
0120018.T09K	12	COVER UNDER	1		abs,painted
0120017.T09K	13	MOLD L/H SID E,ABS	1		abs,painted
Q397.42.06	14	NUT SPRING 4MM	8		
GB5789.06020.06	15	BOLT FLANGE M6×20	4		
1410032.T09K	16	PIN TANK COVER	1		
1410035.T09K	17	PIN LO C K 8M M	1		
0120003.T10K	18	LID FUEL CAP MAIN T	1		
0159003.T09K	19	Left pedal rubber cover	1		
0159004.T09K	20	Right pedal rubber cover	1		
0940004.T10K	21	fuel button cable	1		

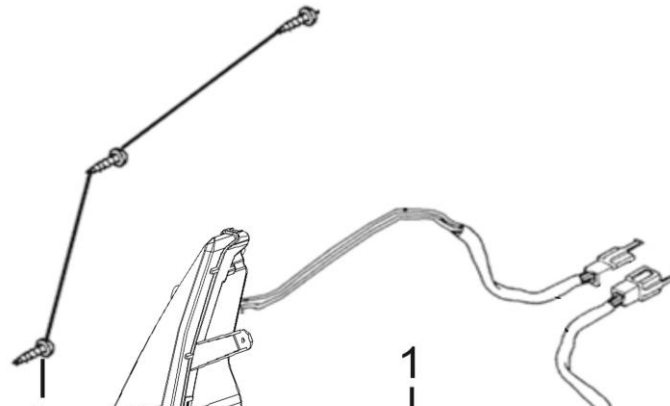
SPEEDOMETER

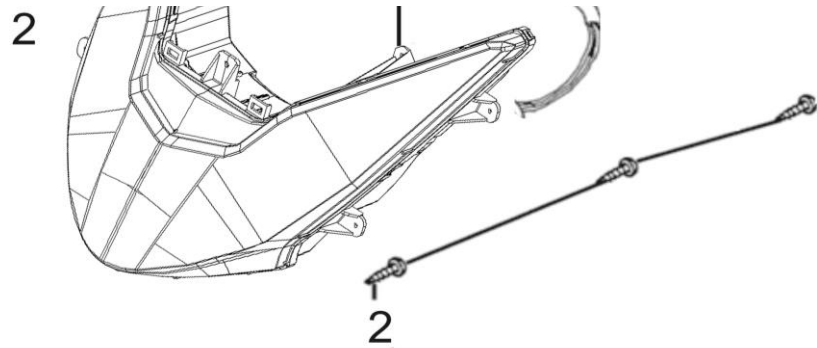


Code	NO.	DESCRIPTION	QTY	Amount	NOTE
0800000.T10J.01	1	SPEEDOMETER ASSY.(MILE/DOT), Euro 5	1		
GB845.48016.06	2	SCREW TAPPING 4.8*16	4		

15

HEADLIGHT

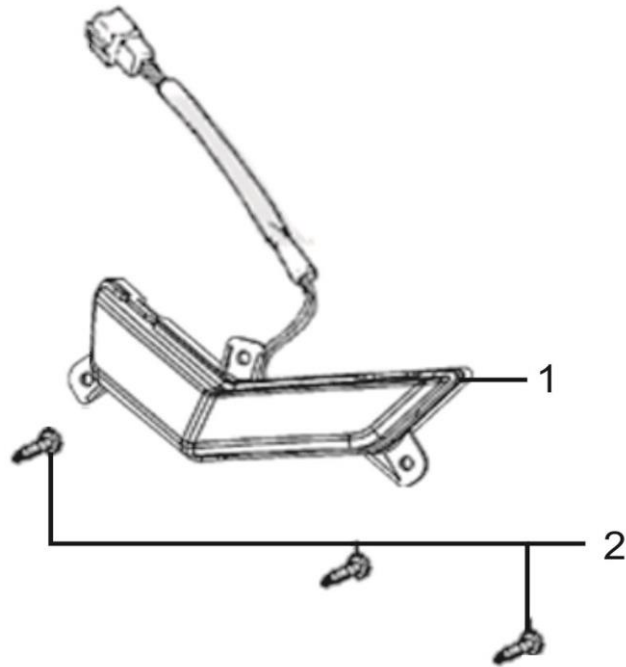




Code	NO.	DESCRIPTION	QTY	Amount	NOTE
0210000.T10P	1	HEADLIGHT	1		
GB845.48016.06	2	SCREW TAPPING 4.8*16	6		

16

WINKER

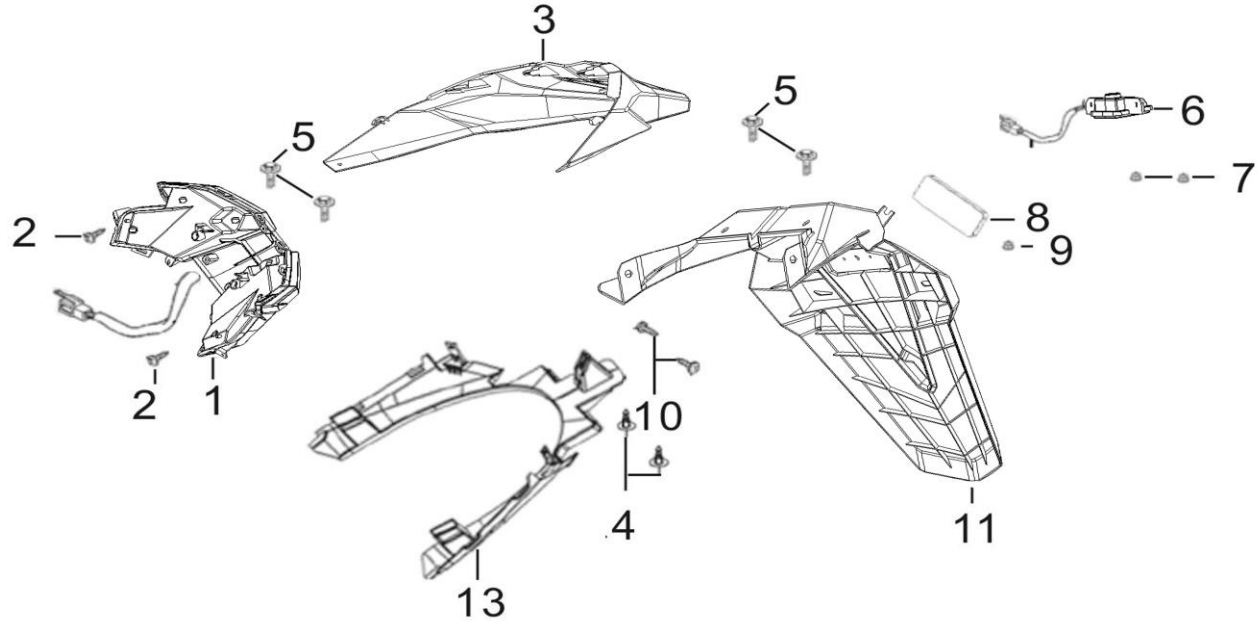


Code	NO.	DESCRIPTION	QTY	Amount	NOTE
0251000.T10K	1	LIGHT SET FR POSITION	1		

GB845.48016.06	2	SCREW TAPPING 4.8*16	4		
----------------	---	----------------------	---	--	--

17

TAILLIGHT

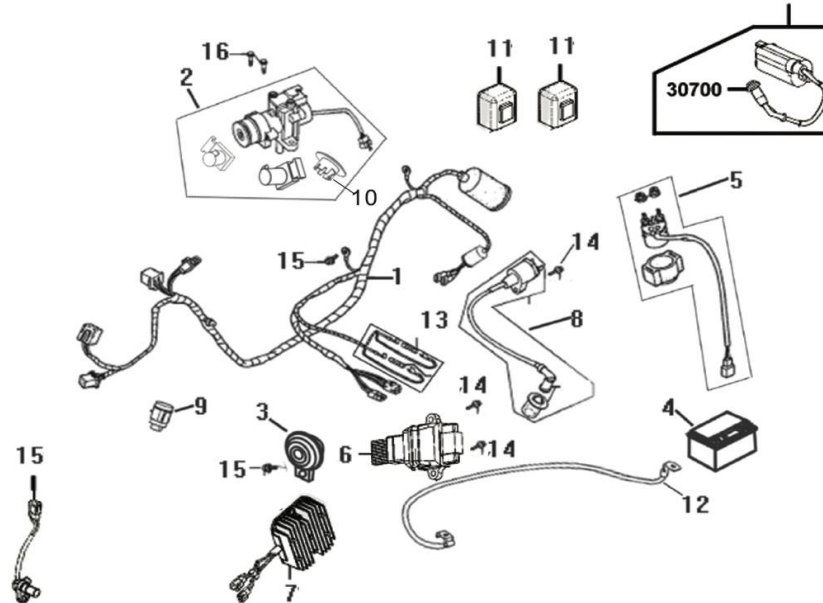


Code	NO.	DESCRIPTION	QTY	Amount	NOTE
0220000.T10K	1	TAILLIGHT ASSY	1		
GB845.48016.06	2	SCREW TAPPING 4.8*16	2		
0130023.T10K	3	UPPER COVER OF REAR FENDER			
GB5789.06016.06	4	BOLT FLANGE M6×16	2		
GB5789.06020.06	5	BOLT FLANGE M6×20	2		
0240000.T10K	6	LICENSE PLATE LAMP	1		
GB6177.1.06.06	7	FLANGE NUT M6	2		
0260002.T09J.01	8	REAR REFLECTOR	1		
GB6177.1.06.06	9	FLANGE NUT M6	1		
GB845.48016.06	10	SCREW TAPPING 4.8*16	2		

0130022.T10K	11	REAR FENDER	1		
0130019.T10K	13	FEN D ER R R U P	1		

18

ELECTRICAL SYSTEM

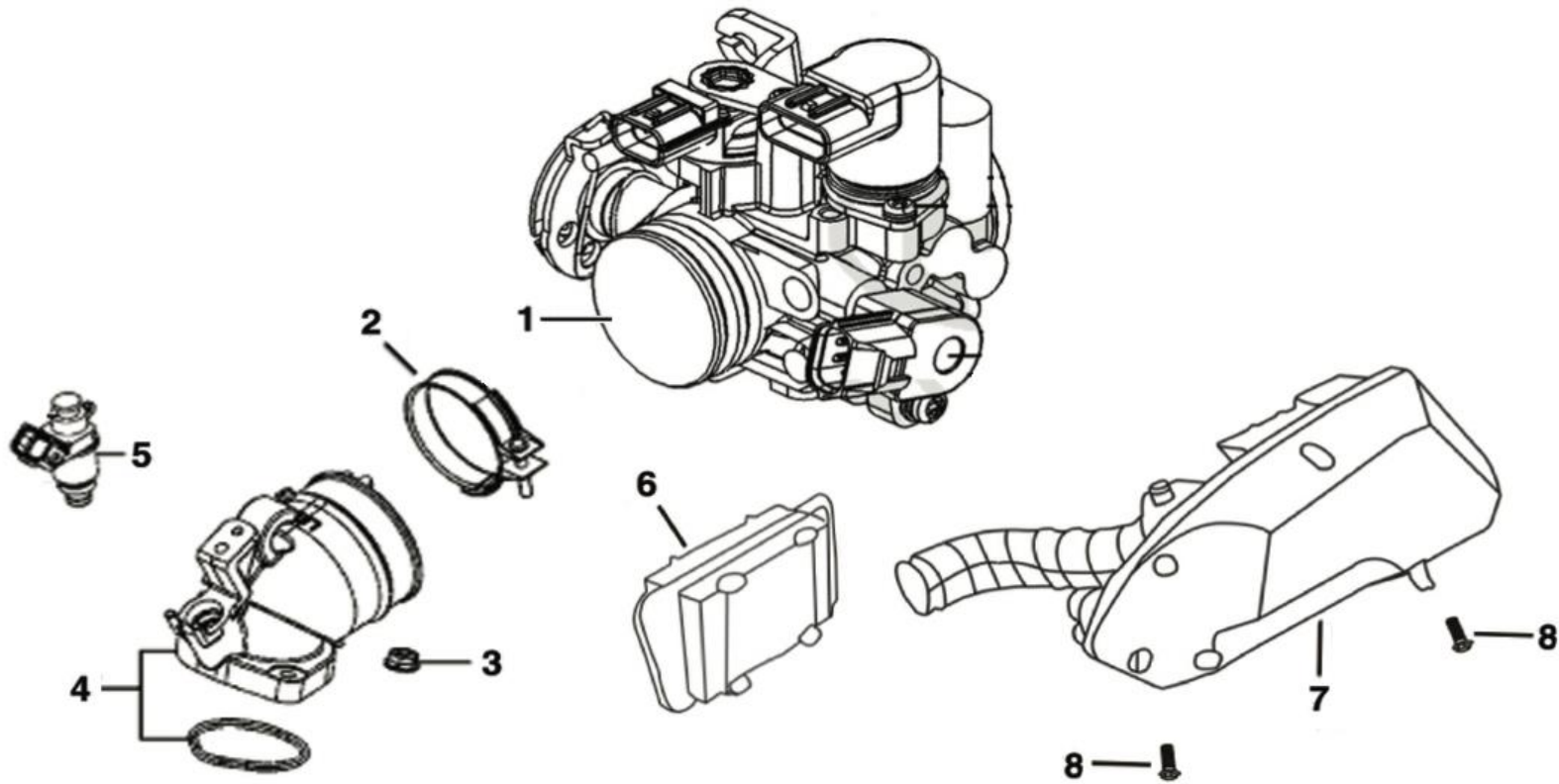


Code	NO.	DESCRIPTION	QTY	Amount	NOTE
0731000.T09J.03		MAIN WIRE HARNESS,EURO 5,for one pin ECU	1		
0731000.T09J.04	1	MAIN WIRE HARNESS,EURO 5,for double pin EC	1		
0710000.T10K	2	MAIN LOCK ASSY	1		
0740001.T09K	3	HORN	1		
1521000.T09K	4	BATTERY	1		
0720002.T09K	5	START RELAY	1		
0720005.T09J.01	6	ASSY ECU ,EURO 5	15		
T09K.0720001	7	RECTIFIER	1		
T09K.0720004	8	IGNITION COIL COMP.	1		

T09K.0740002	9	FLASHER	1		
0711001.T09K	10	COVER MAIN LOCK	1		
0720007.T09K.01	11	RELAY COMP	2		
0731002.T09K	12	CATHODE LINE	1		
0731006.T09K	13	FUSE	2		
GB823.05020.06	14	BOLT HEX 5*20	1		
1140001.T09K	15	TEMP SENSOR	1		
GB70.1.06016.06	16	BO LT W ASH M6*16	2		

19

AIR FILTER

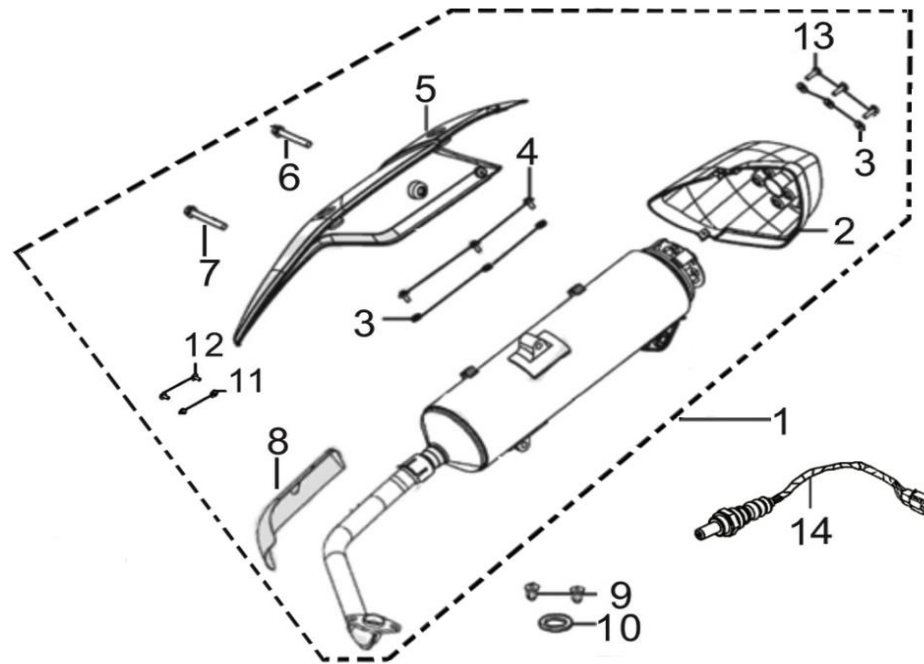


Code	NO.	DESCRIPTION	QTY	Amount	NOTE
1141000.T09K	1	TH R O T T L E B O D Y A S S Y	1		

1121001.T09K	2	C -H O PE 10-59	2		
GB6177.1.06.06	3	FLANGE NUT M6	2		
T09K.16311	4	INLET PIPE 新建	1		
1030001.T09K	5	N JEC TO R U N IT FU EL	1		
1121002.T09K	6	ELEMENT,AIR FILTER	1		
1121000.T09K	7	AIR FILTER	1		
GB5789.06035.06	8	FLANGE BOLT M6*35	2		

20

EXHAUST SYSTEM



Code	NO.	DESCRIPTION	QTY	Amount	NOTE
1130000.T10J.07	1	EXHAUST MUFFLER ASSY.(CATALYZER) kot EURO 5	1		+60 catalyzer
1130007.T10K	2	TAIL C AP. M U FFLER	1		nylon,painted
1130012.T09K	3	PAC KING PROTECTOR	6		
1130015.T09K	4	spacer,muffler cover	3		
1130006.T10K	5	MUFF. PROTECTOR	1		nylon,painted

GB5789.08035.06	6	BOLT FLANGE M8×35	1		
GB5789.08055.06	7	BOLT FLANGE M8×55	1		
1130008.T09K.01	8	PROTECTOR . EXH PIPE	1		
1410036.T09J	9	NUT (H EX) CAP M8*32	2		
1130003.T09K	10	GASKET OF EXHAUST PIPE	1		
1130012.T09K	11	ANTI HEAT WASHER	2		
1130015.T09K	12	BOLT	5		
1130014.T09K	13	BOLT	3		
0720006.T09J.01	14	O ₂ SENSOR	1		

ACCESSORY

0153000.T10K	1	REAR BACK REST	1		
1311000.T09K	2	REAR CARRIER,ALU	1		
1312000.T09K	3	REAR TOP BOX	1		

If add a aluminum rear carrier,the following parts will be needed too,and the color is same as 0130001.T10K and 0130002.T10K

0130033.T10K		L FR cover for add aluminum rear carrier	1		
0130034.T10K		R FR cover for add aluminum rear carrier	1		
0130035.T10K		L RR cover for add aluminum rear carrier	1		
0130036.T10K		R RR cover for add aluminum rear carrier	1		