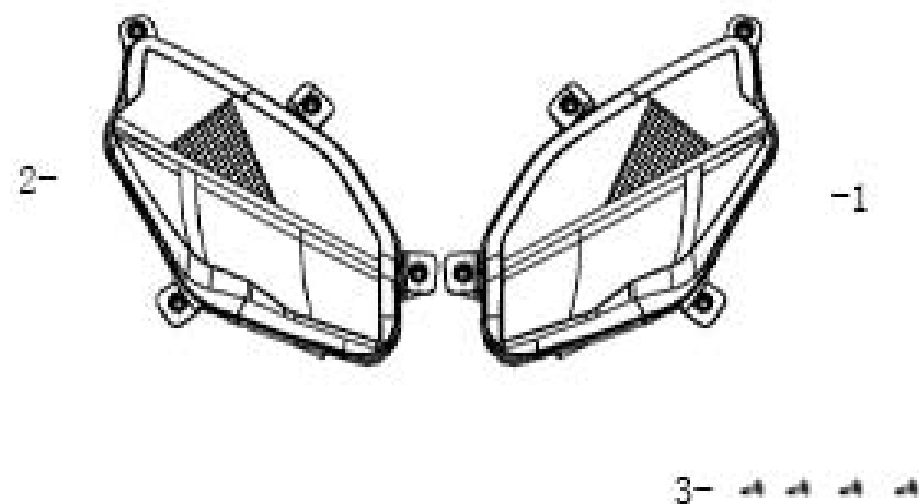


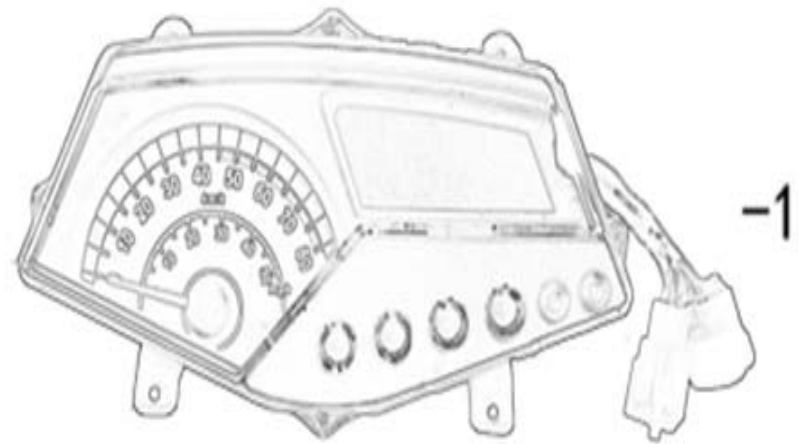


Canoe 50 (New Freedom Lighting 50) Part List



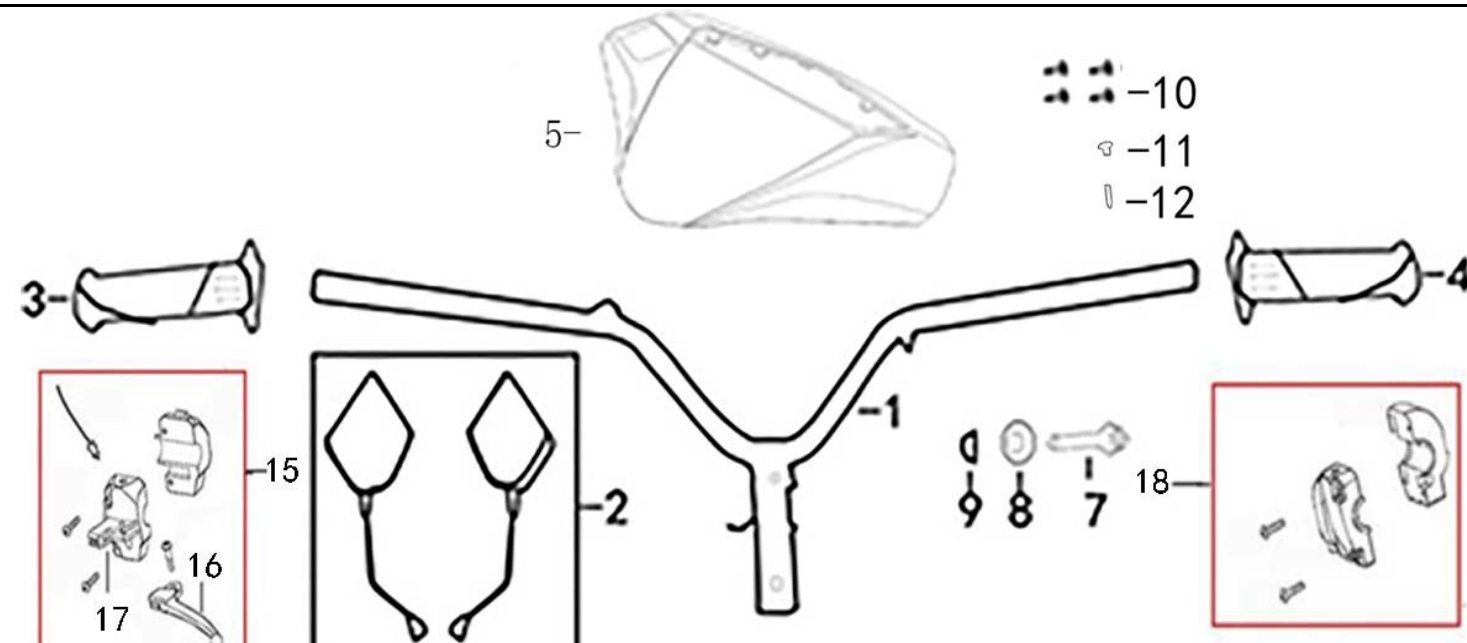
F01 = LIGHT ASSY HEAD

Page	Group				Code (U8)	Item	QTY
	Main	Sub-	Detail	Deta			
F01	1				33200-BLA5-9000	Left front headlamp	1
F01	2				33100-BLA5-9000	Right front headlamp	1
F01	3				93401-42012-03	SCREW, ST4.2*12	8



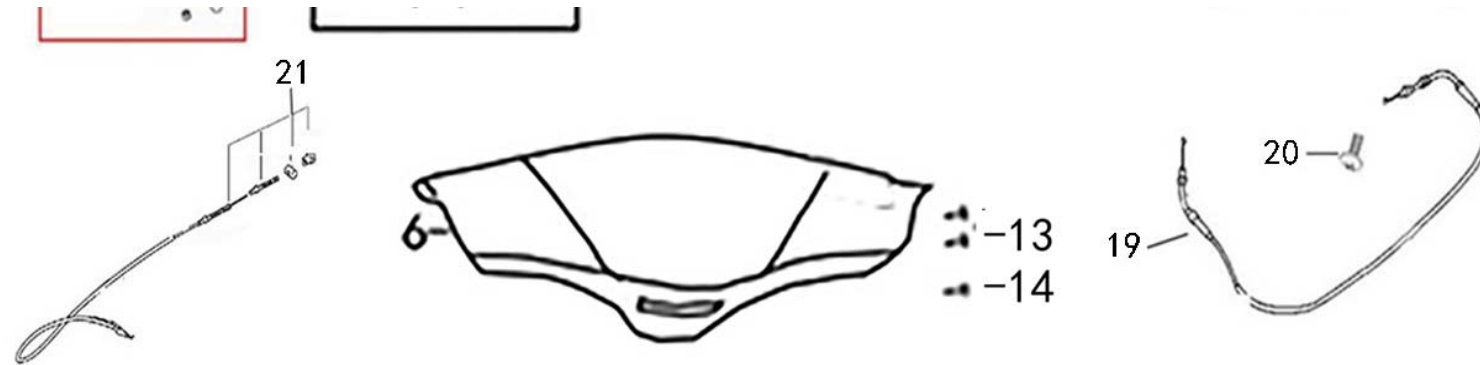
F02 = SPEED METER ASSY

Page	Group					Code (U8)	Item	QTY
	Main	Sub-	Detail	Deta	Deta			
F02	1					37200-BLA5-E100	Instrument	1
F02	2					93401-42012-03	SCREW, ST4.2*12	4

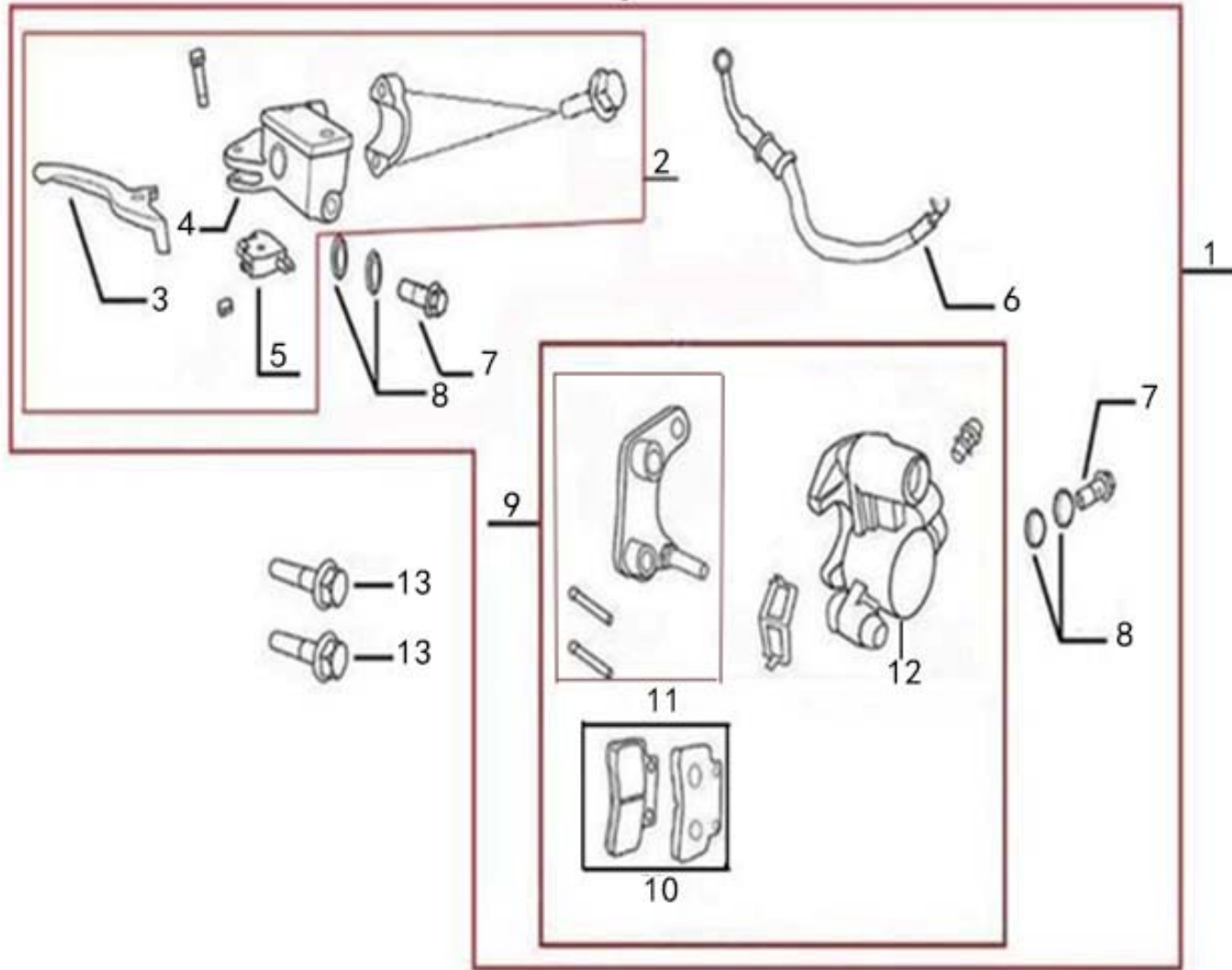


F03 = HANDLE COMP STRG&MIRROR ASSY BACK

Page	Group					Code (U8)	Item	QTY
	Main	Sub-	Detail	Deta	Deta			
F03	1					53100-BLA5-9000	The direction of the	1
F03	2					8811A-LF-E000	Rear view mirror	1SET
F03	3					53140-QG-9100	Come on hand to set	1
F03	4					53166-QG-9100	The set of left hand	1
F03	5					53206-BLA5-9000	Instrument cover	1
F03	6					53205-BLA5-9000	Instrument lower cover	1
F03	7					92201-10045-03	BOLT FLANGE 10*45	1
F03	8					95401-10000-03	NUT, M10	1
F03	9					53125-F8-9000	COLLAR HANDLE SET	1
F03	10					93401-42012-03	SCREW, ST4.2*12	5
F03	11					90099-BLA5-9000	Expansion screw	1
F03	13					93401-42012-03	SCREW, ST4.2*12	2

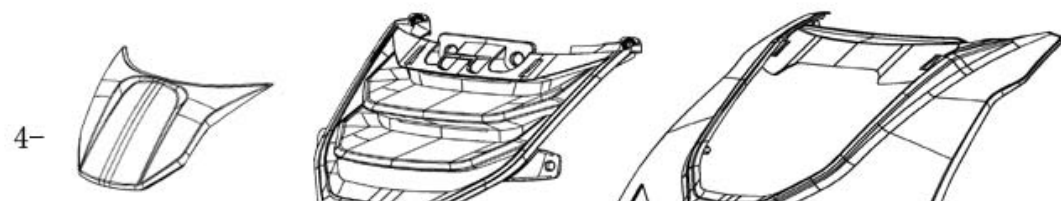


F03	14				94001-06016-03	BOLT FLANGE 6*16	1
F03	15				3520A-B08-9000	SW ASSY LB HNDL	1
F03		16			53176-B08-9000	LEVER L STRG HANDLE	1
F03		17			35340-GZ-9000	SW ASSY FR STOP	1
F03	18				3515A-AAR8-A100	SW ASSY RH HNDL	1
F03	19				17910-B08-9100	Throttle line	1
F03	20				93201-05012-03	SCREW PAN. M5*12	1
F03	21				43450-KY-9000-B	THE BRAKE LINE	1



F04 = SUB HARNESS SET FR M/C COMP

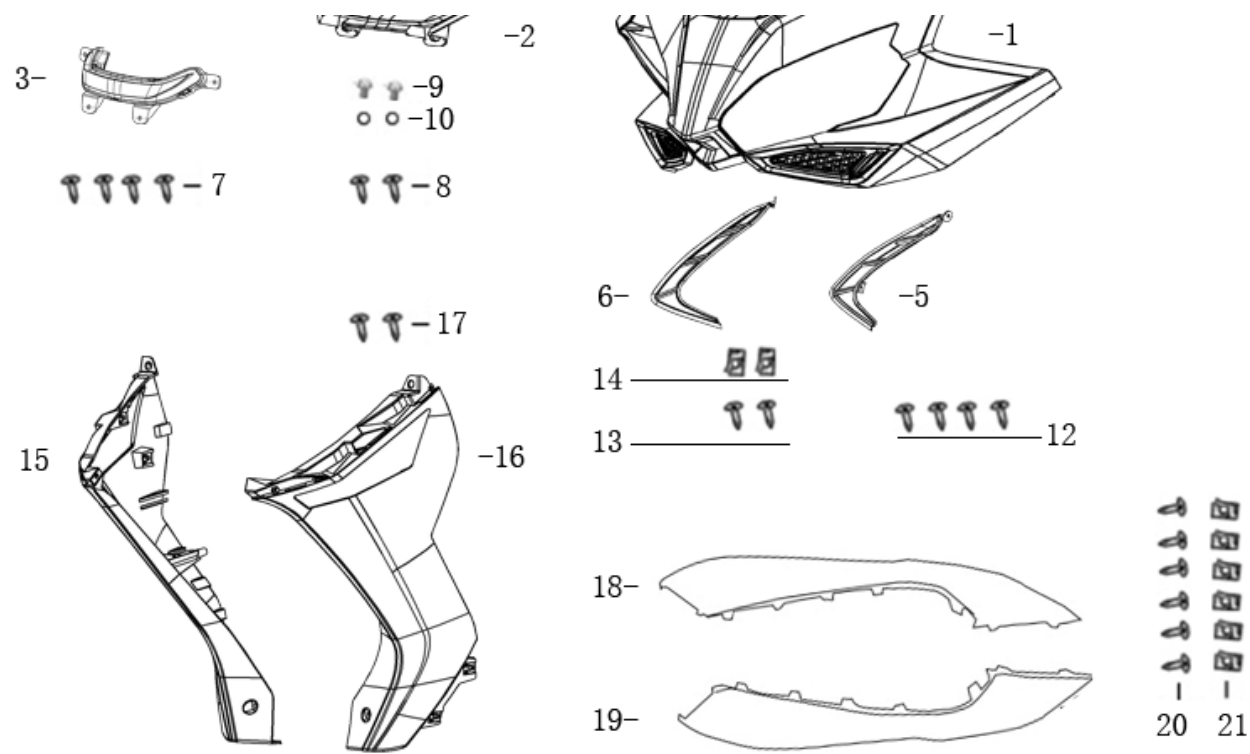
Page	Group					Code (U8)	Item	QTY
	Main	Sub-	Detail	Deta	Deta			
F04	1					4550A-BLA5-9000	SUB HARNESS SET FR M/C COMP	1
F04		2				45500-BLA5-9000	SUB HARNESS SET FR M/C	1
F04			3			53175-AEA8-9000	HANDLE R	1
F04			~			90115-XSG-9000	6*32	1
F04			~			95001-06000-03	M6	1
F04			4			45501-BLA5-9000	CRLINDER BODY	1
F04			5			10099-F8-9500	SHUT-OFF BLOCK CONSTITUTE FR	1
F04			~			46518-F8-9000	5*10	1
F04			~			45502-ABA9-9000	Front disc brake upper pump cylinder fixing base	1
F04			~			92401-06022-03	BOLT FLANGE 6*22 (G)	2
F04		6				45126-AEA8-9000	HOSE ASSY FR BRK	1
F04		7				90045-F8-9000	OIL BOLT 10*22	2
F04		8				90046-F8-9000	WASHER OIL BOLT	4
F04		9				45200-AEA8-9000	CALIPER ASSY FR	1
F04			10			4510A-ACAE-9000	PAD COMP	1SET
F04			11			45204-AEA8-9000	Front disc brake lower pump mounting bracket	1
F04			12			45201-AEA8-9000	Front disc brake lower pump auxiliary oil cylinder device	1
F04	13					92201-08035-03	BOLT FLANGE 8*35	2



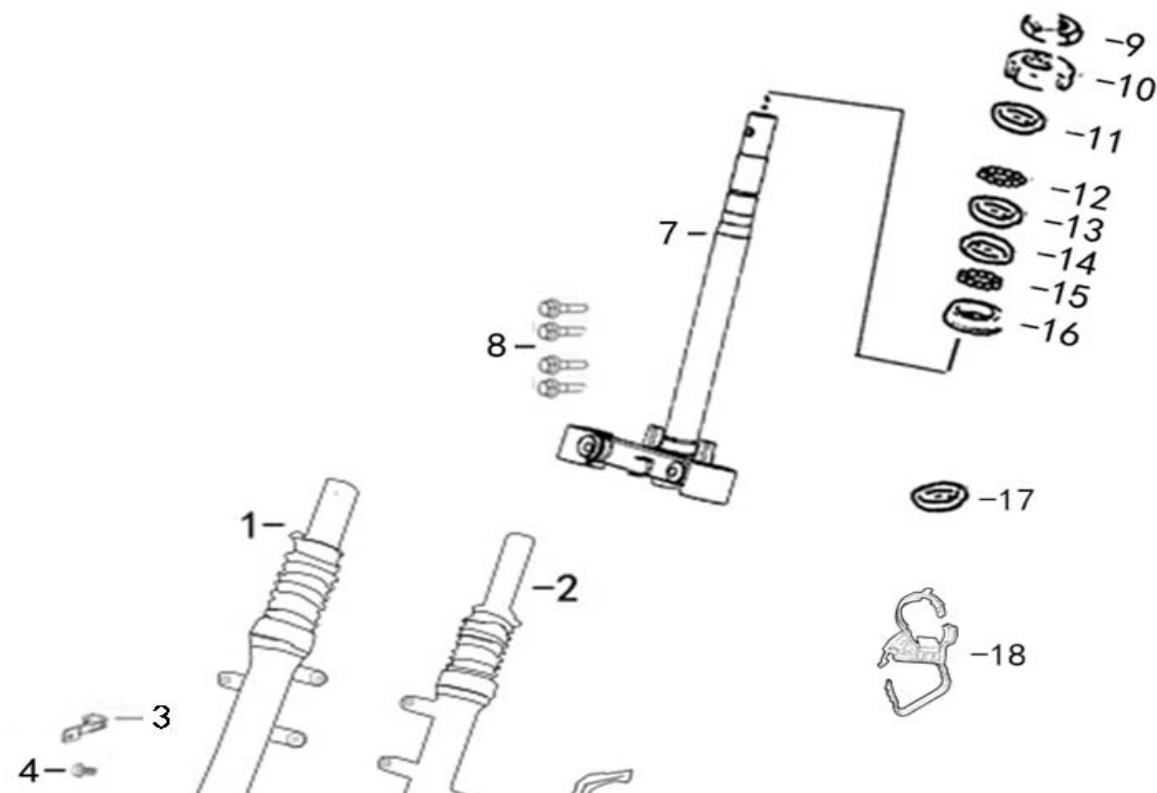
11-11

F05 = Plastic parts group

Page	Group					Code (U8)	Item	QTY
	Main	Sub-	Detail	Deta	Deta			
F05	1					64302-BLA5-9000	Front circumference	1
F05	2					64326-BLA5-9000	Front wall trim	1
F05	3					33550-BLA5-9000	Front position lamp	1
F05	4					64301-BLA5-9000	front panel	1
F05	5					64203-BLA5-9000	Front left trim	1



F05	6				64303-BLA5-9000	Front wall right trim	1
F05	7				93401-48012-03	SCREW, ST4.8*12	4
F05	8				93401-42012-03	SCREW, ST4.2*12	2
F05	9				92101-06016-03	BOLT FLANGE 6*16	2
F05	10				95801-06000-03	WANSHWE 6MM	2
F05	11				93401-42012-03	SCREW, ST4.2*12	2
F05	12				93401-42012-03	SCREW, ST4.2*12	4
F05	13				93401-48016-03	SCREW, ST4.8*16	2
F05	14				90601-F8-9000	NUT SPRING 4MM	2
F05	15				64305-BLA5-9000	Front right guard	1
F05	16				64306-BLA5-9000	Front left guard	1
F05	17				93401-42012-03	SCREW, ST4.2*12	2
F05	18				64305-AFAP-9000	Right bead	1
F05	19				64306-AFAP-9000	Left bead	1
F05	20				93401-48016-03	SCREW, ST4.8*16	6
F05	21				90601-F8-9000	NUT SPRING 4MM	6



F06 = Lower connection board&Steel bowl

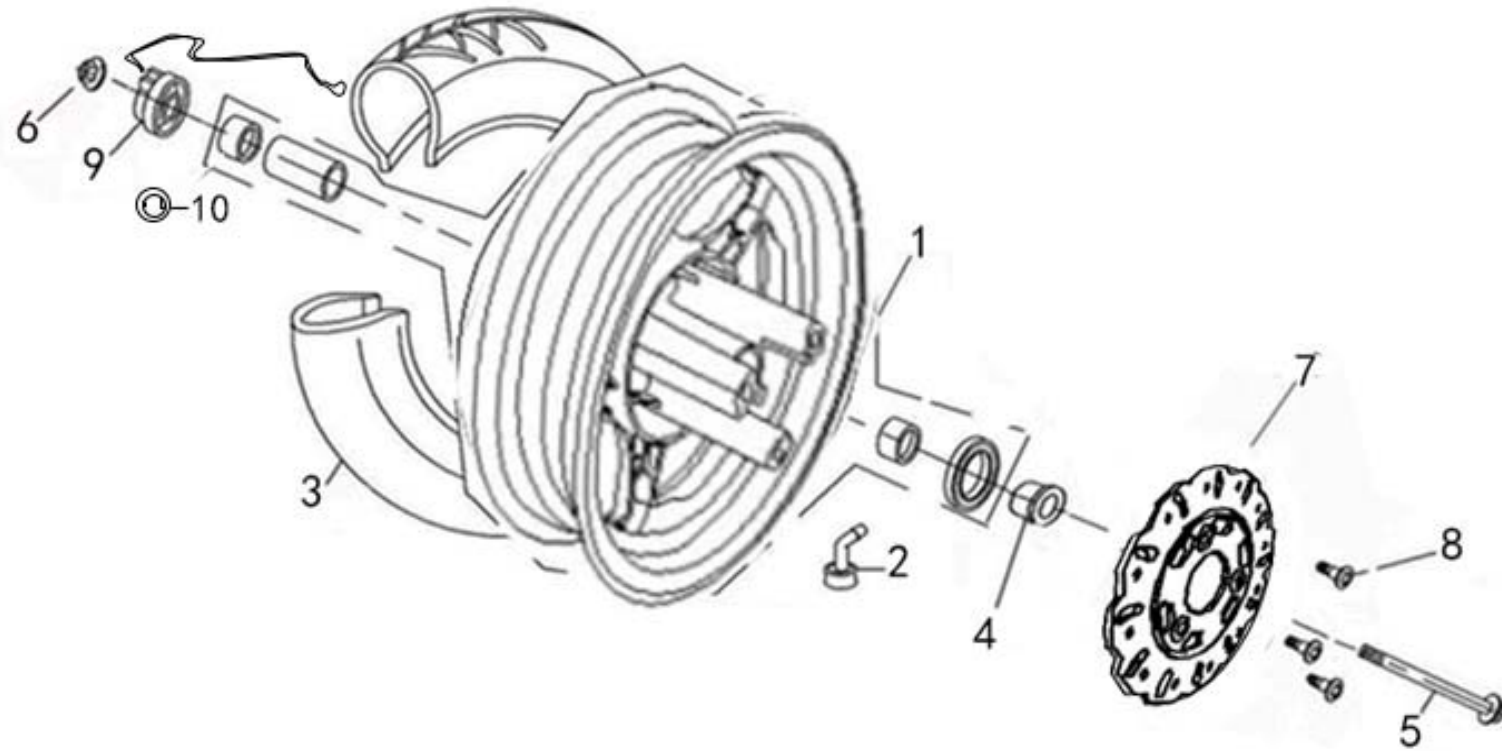
Page	Group				Code (U8)	Item	QTY
	Main	Sub-	Detail	Deta			
F06	1				51400-BLA5-9000	FORK SET R FR	1
F06	2				51500-BLA5-9000	FORK SET L FR	1
F06	3				43128-F8-9000	STAY CLAMPER FR BRK CABLE	1
F06	4				92501-06012-03	BOLT FLANGE 6*12	1
F06	5				43128-B08-9000	STAY HOSE	1
F06	6				92501-06012-03	BOLT FLANGE 6*12	1
F06	7				53200-BLA5-9000	Bottom allied board	1
F06	8				92201-08040-03	BOLT FLANGE 8*40	4
F06	9				50306-B08-9000	The main rod locking nut	1
F06	10				53221-B08-9000	Locking teeth	1
F06	11				53222-B08-9000	Dust cover	1
F06	12				53213-B08-9000	BALL STEEL	1
F06	13				50301-B08-9000	RACE UP STRG BALL	1
F06	14				50302-B08-9000	RACE (STRG BOT) BALL	1
F06	15				53214-B08-9000	BALL STEEL	1
F06	16				53212-B08-9000	RACE (STRG BOTTOM) CONE	1
F06	17				50307-AFA1-9000	Steel bowl rubber sheath	1



F06	18					94591-AFA1-9000	Nylon clamp for faucet	1
-----	----	--	--	--	--	-----------------	------------------------	---

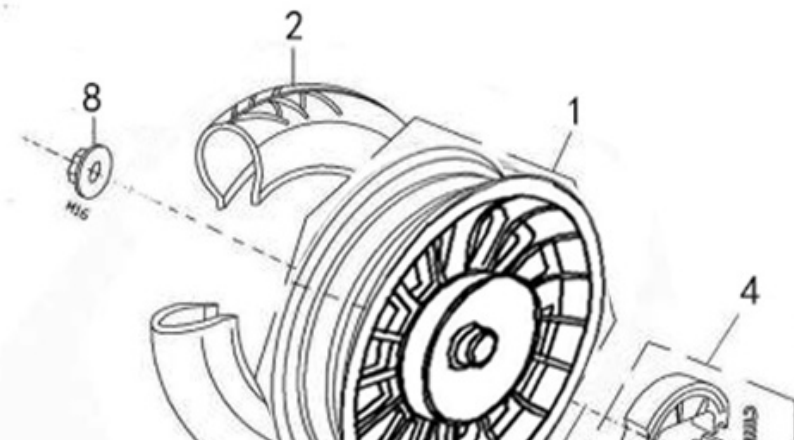
F07 = WHEEL SET FR

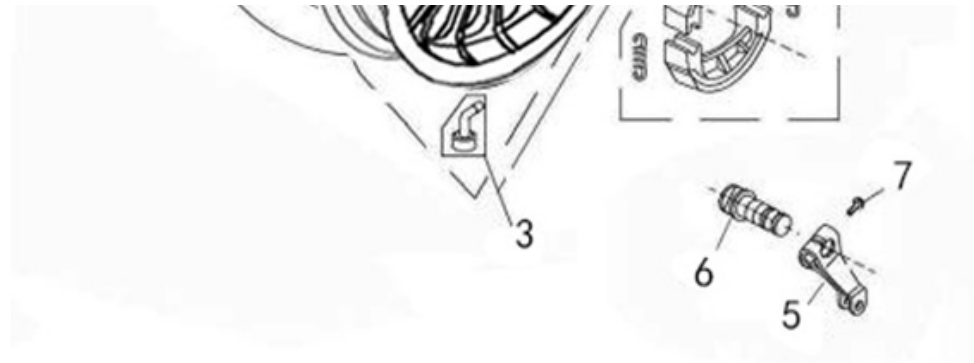
Page	Group					Code (U8)	Item	QTY
	Main	Sub-	Detail	Deta	Deta			
F07	1					44600-KY-9106	RIM FR WHEEL	1
F07	2					42753-DGW-9000	VALVE(PVR-70)&CAP(E)	1
F07	3					44710-AFAP-9000-D	TIRE ASSY (90/70-12)	1
F07	4					44311-AFAP-9000	COLLAR FR WHEEL SIDE	1
F07	5					44301-XGW-9000	AXLE FR WHEEL M10*198	1
F07	6					95401-10000-03	NUT U FLANGE 10MM (G)	1
F07	7					45121-AEA8-9000	DISK FR BRAKE	1
F07	8					93601-08025-02	BOLR DISK	3
F07	9					44800-BLA5-9000	GEAR BOX ASSY	1
F07	10					44801-BLA5-9000	Actuator mounting plate	1



F08 = WHEEL COMP RR CAST

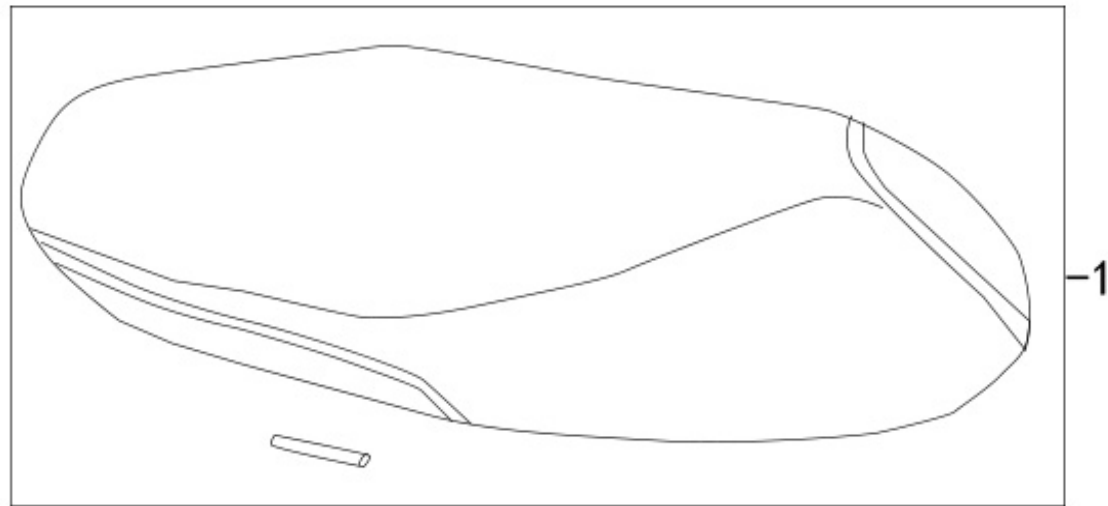
Page	Group					Code (U8)	Item	QTY
	Main	Sub-	Detail	Deta	Deta			
F08	1					42600-B08-9706	AFTER THE ALUMINUM WHEEL	1
F08	2					44710-AFAP-9000-D	TIRE 90/70-12	1
F08	3					42753-DGW-9000	TIRE INFLATOR	1
F08	4					4312A-DGW-E200	THE REAR BRAKE SHOE BLOCK	1
F08	5					43410-DGW-9100	THE REAR BRAKE ARM	1
F08	6					43141-DGW-9100	THE REAR BRAKE ROCKER ARM SHAFT	1
F08	7					92401-06032-03	BOLT FLANGER 6*32(T8)	1
F08	8					95501-16000-03	NUT U FLANGE 16MM	1





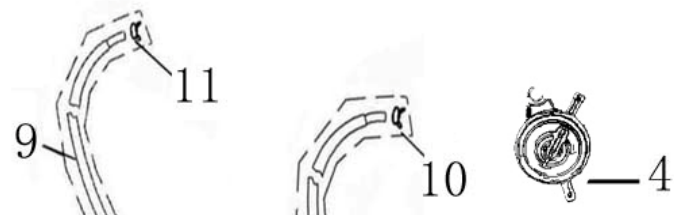
F09 = SEAT ASSY

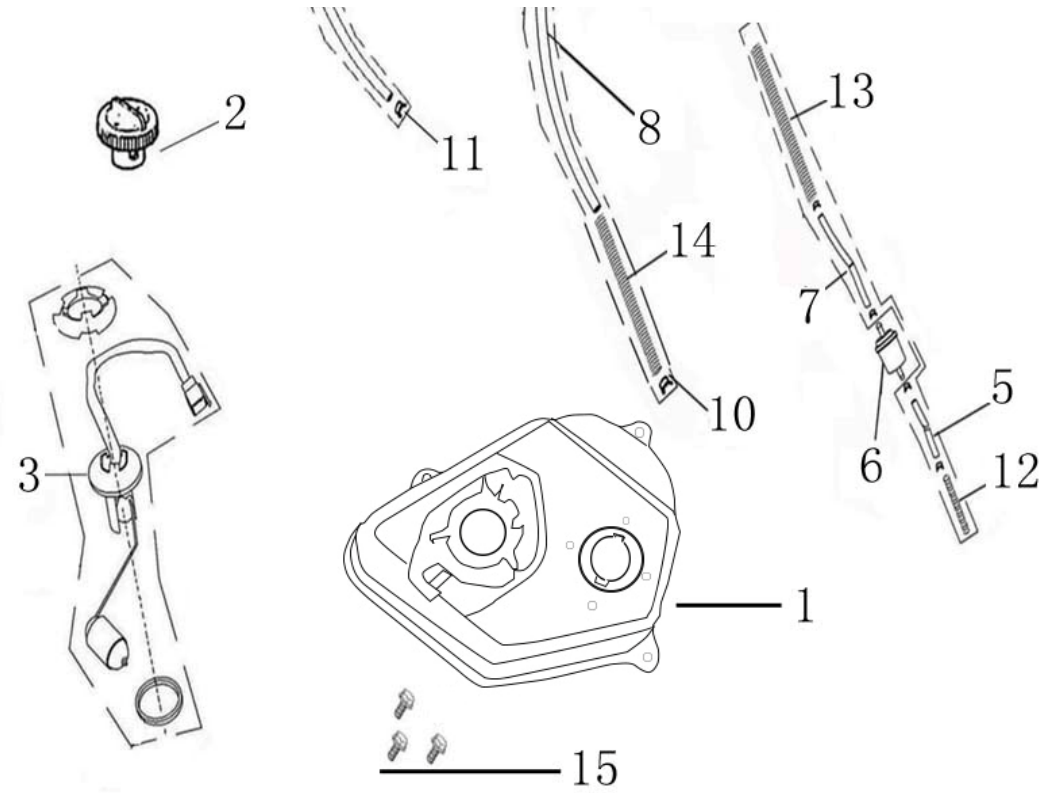
Page	Group					Code (U8)	Item	QTY
	Main	Sub-	Detail	Deta	Deta			
F09	1					77200-AFAP-9100-B	Seat cushion (including seat cushion	1



F10 = FUEL UNIT ASSY

Page	Group					Code (U8)	Item	QTY
	Main	Sub-	Detail	Deta	Deta			
F10	1					17500-AFAP-9000	The fuel tank	1
F10	2					17620-F8-9000	The cap	1

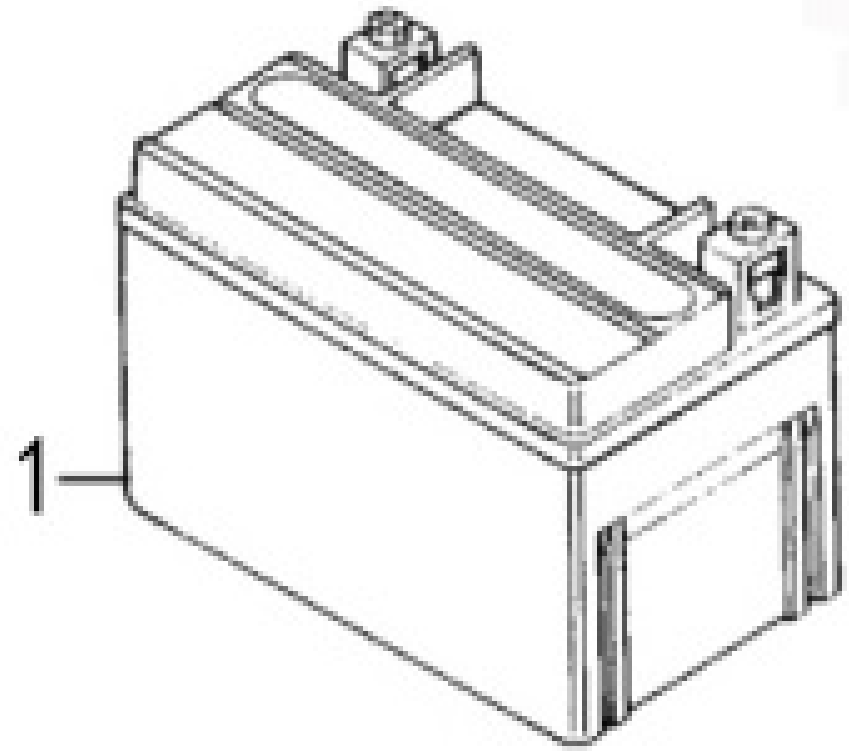


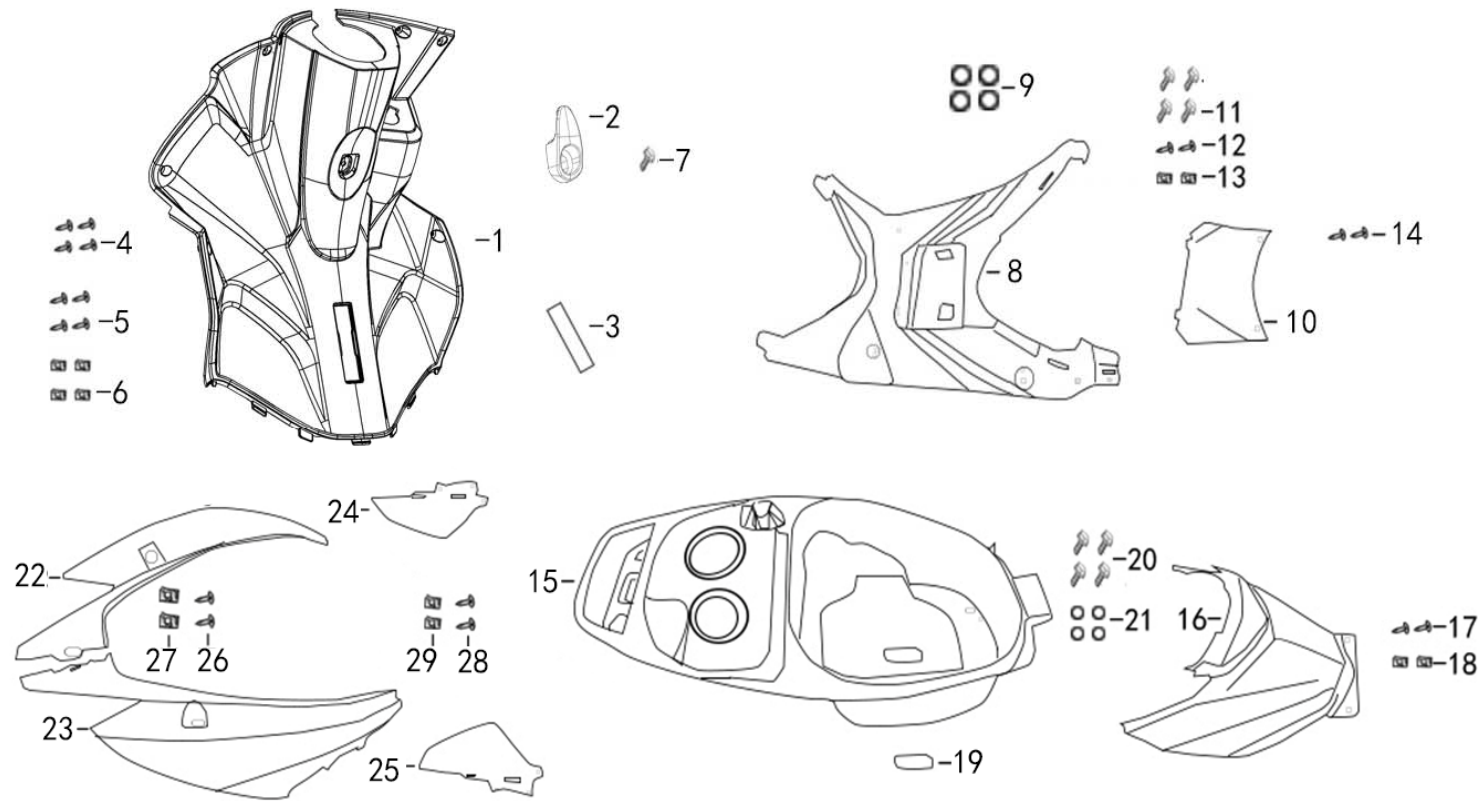


F10	3				3780A-AFAP-9000	Oil level sensor assembly	1
F10	4				16950-TS-9000	Separate self-priming switch	1
F10	5				1768A-WY-9100	Oil filter inlet pipe 130mm	0.13M
F10	6				18658-F8-9000	The filter	1
F10	7				1768C-B08-9000	Oil filter flowline 100mm	0.1M
F10	8				1768G-ALA6-9000	Self-priming switch flowline 300 mm	0.3M
F10	9				1768B-ACA7-9000	Negative pressure pipe 410mm	0.41M
F10	10				19411-F8-9000	Steel pickup spring Φ 8.5	6
F10	11				19414-F8-9000	Steel pickup spring Φ 7.5	2
F10	12				90016-XF-9000	Spring 110 mm tubing protection	1
F10	13				90016-DGW-9100	Spring 85 mm tubing protection	1
F10	14				90016-LB-9000	Spring 230 mm tubing protection	1
F10	15				92101-06016-03	BOLT FLANGE 6*16	3

F11 = BATTERY YTX7A-BS

Page	Group					Code (U8)	Item	QTY
	Main	Sub-	Detail	Deta	Deta			
F11	1					31500-F8-A000-A00A	BATTERY YTX7A-BS	1





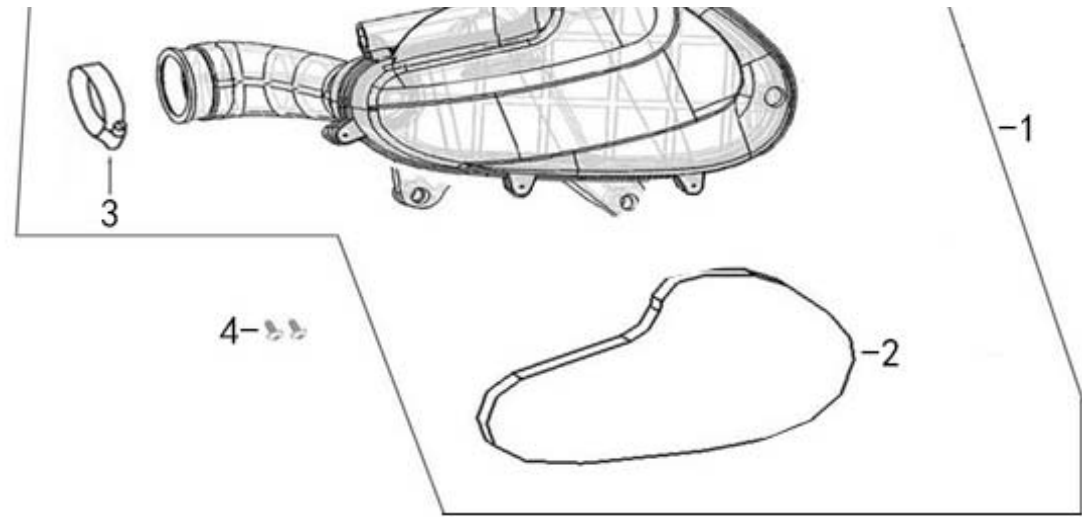
F12 = BOX LUGGAGE ASSY & REAR CARRIER

Page	Group					Code (U8)	Item	QTY
	Main	Sub-	Detail	Deta	Deta			
F12	1					81131-BLA5-9000	hold-all	1
F12	2					83760-BLA5-9000	Helmet hook	1
F12	3					81142-AFAP-9000	Number cover	1
F12	4					93401-42012-03	SCREW, ST4.2*12	7
F12	5					93401-48016-03	SCREW, ST4.8*16	4
F12	6					90601-F8-9000	NUT SPRING 4MM	4
F12	7					92101-06020-03	BOLT FLANGE 6*20	1
F12	8					64310-AFAP-9000	The pedals	1
F12	9					64333-AFAP-9000	The pedals plug	4
F12	10					50326-AFAP-9000	Electric bottle caps	1
F12	11					92101-06016-03	BOLT FLANGE 6*16	4
F12	12					93401-48016-03	SCREW, ST4.8*16	2
F12	13					90601-F8-9000	NUT SPRING 4MM	2
F12	14					93401-42012-03	SCREW, ST4.2*12	2
F12	15					81250-AFAP-9000	Glove box	1
F12	16					83750-AFAP-9000	Glove box front cover.	1
F12	17					93401-48016-03	SCREW, ST4.8*16	2
F12	18					90601-F8-9000	NUT SPRING 4MM	2
F12	19					81257-AFAP-9000	Glove box inside the small cover	1
F12	20					92101-06016-03	BOLT FLANGE 6*16	4
F12	21					95801-06000-03	WANSHWE 6MM	4
F12	22					83600-AFAP-9000	Left trim panel	1
F12	23					83500-AFAP-9000	Right trim panel	1
F12	24					83604-AFAP-9000	Left side trim panel	1
F12	25					83605-AFAP-9000	Right side panel	1
F12	26					93401-48016-03	SCREW, ST4.8*16	2
F12	27					90601-F8-9000	NUT SPRING 4MM	2
F12	28					93401-48016-03	SCREW, ST4.8*16	2
F12	29					90601-F8-9000	NUT SPRING 4MM	2

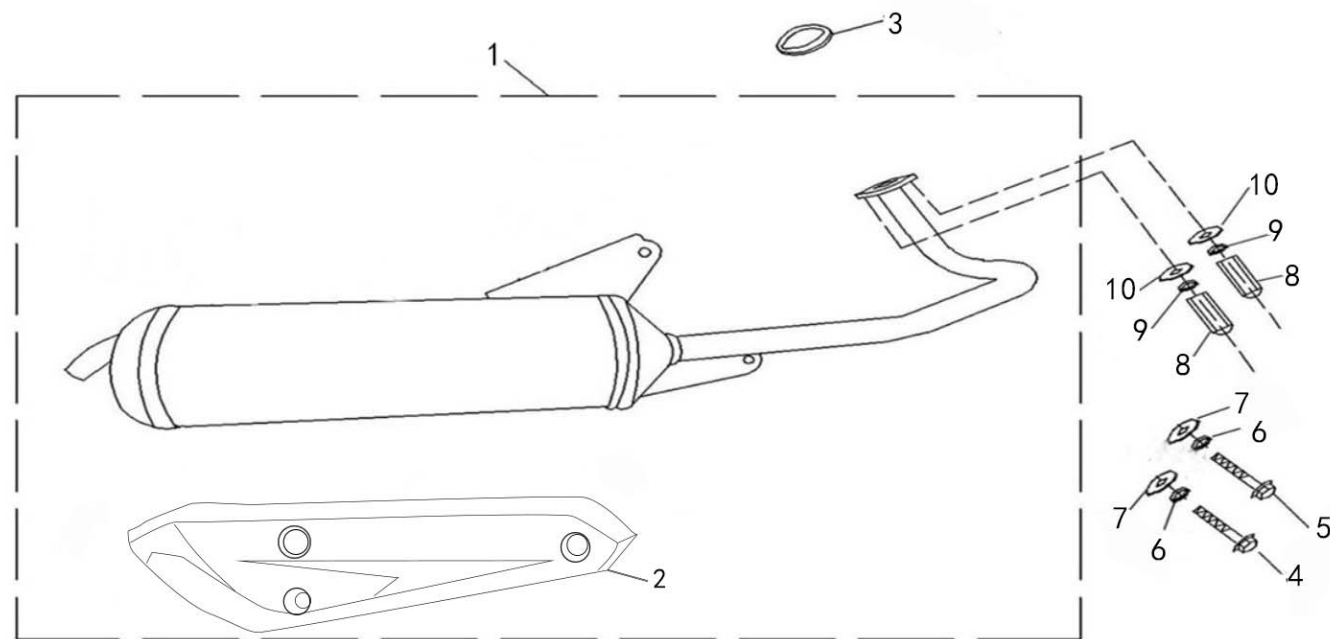
F14 = AIR/C ASSY

Page	Group					Code (U8)	Item	QTY
	Main	Sub-	Detail	Deta	Deta			
F14	1					17200-ALA1-E000	AIR/C ASSY	1



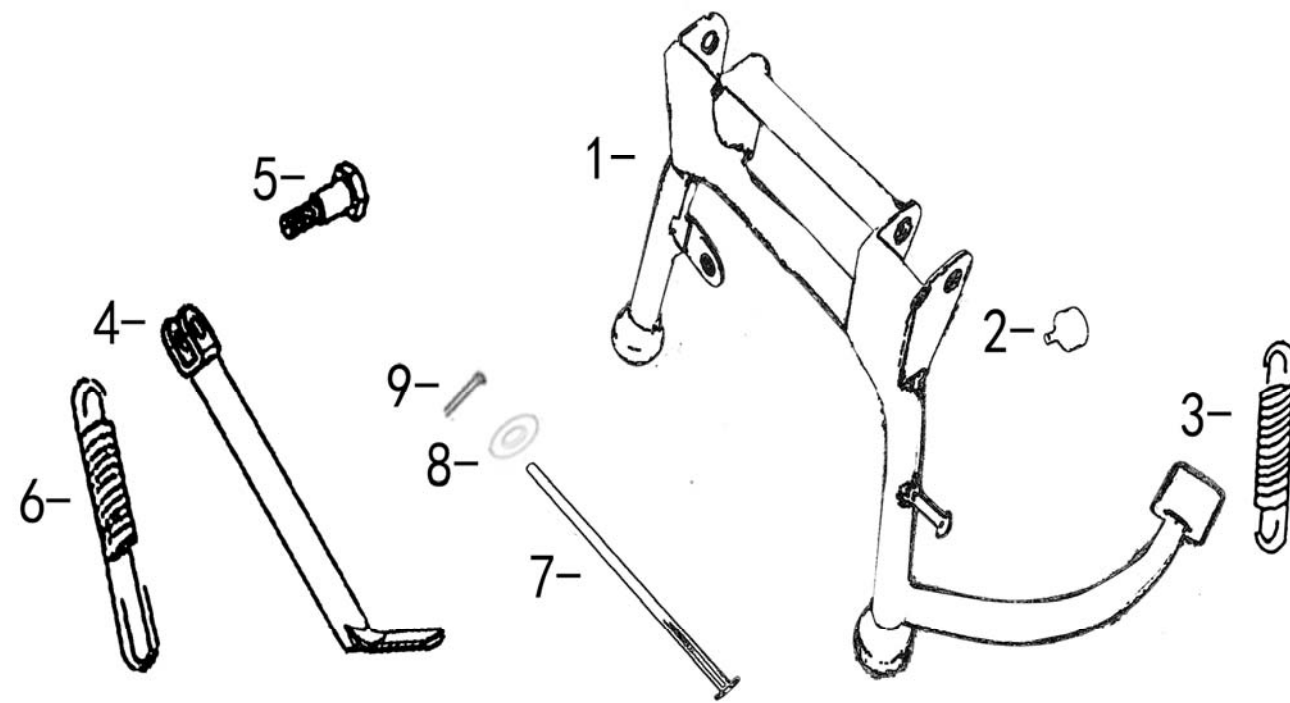


F14		2			17211-ALA1-9000	ELEMENT COMP AIR/C	1
F14		3			90652-DGW-9100	BAND AIR/C CONNECTING TUBE	1
F14	4				92401-06025-03	BOLT FLANGE SH 6*25	2



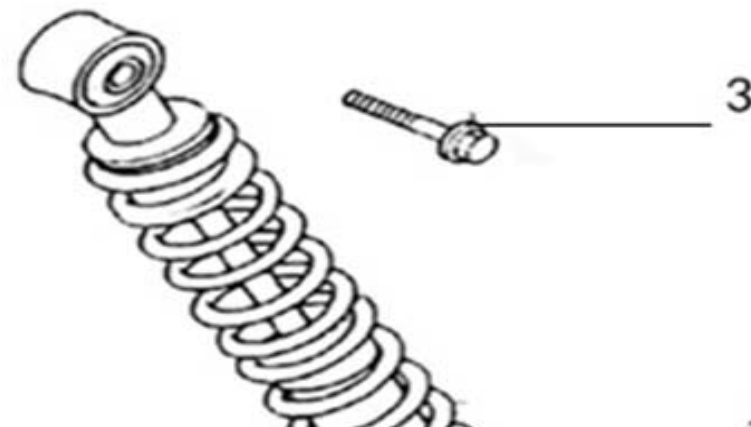
F15 = MUFFLER ASSY EXH

Page	Group					Code (U8)	Item	QTY
	Main	Sub-	Detail	Deta	Deta			
F15	1					1830A-AFAP-9203	MUFFLER ASSY EXH (No catalyst)	1
F15		2				18318-ABA4-9000	PROTECTOR MUFFLER	1
F15	3					18291-F8-9000	Muffler gasket	1
F15	4					92201-08048-03	BOLT FLANGE M8X48	1
F15	5					92201-08055-03	BOLT FLANGE M8X55	1
F15	6					95901-08000-03	SPY WANSHWE 8MM	2
F15	7					95801-08000-03	WANSHWE 8MM	2
F15	8					90201-F8-9000	NUT (HEX) CAP 6MM	2
F15	9					95901-06000-03	SPY WANSHWE 6MM	2
F15	10					95801-06000-03	WANSHWE 6MM	2



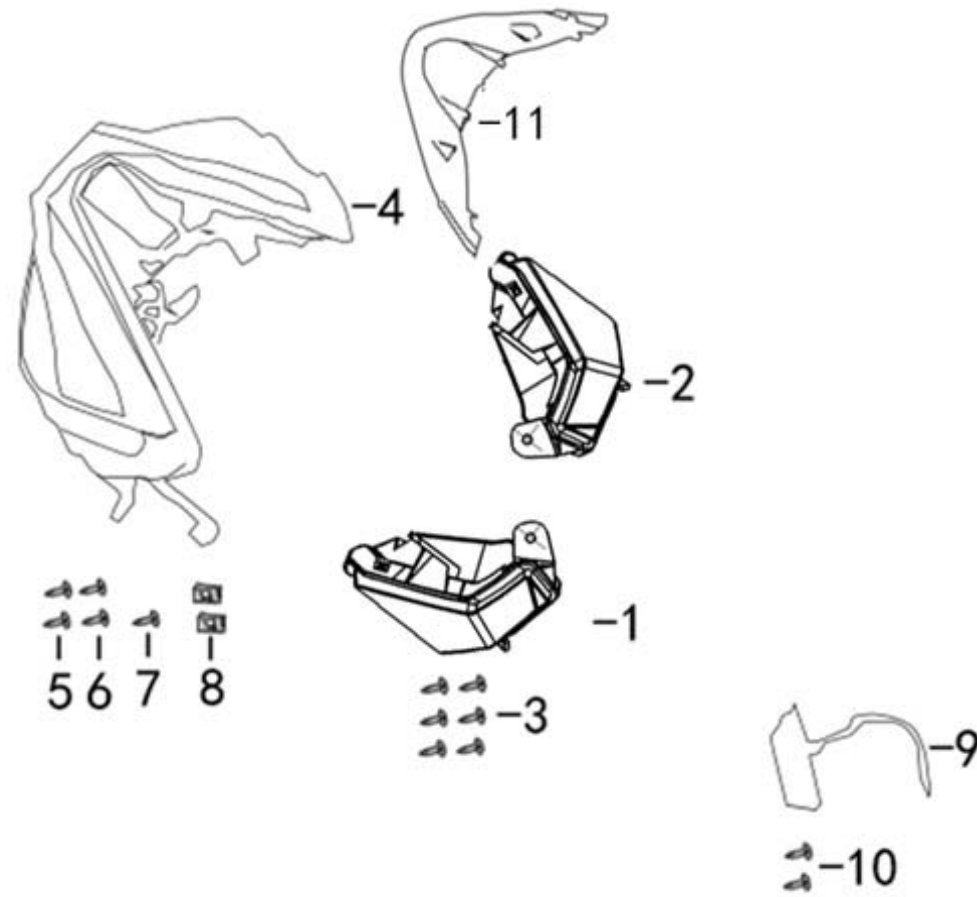
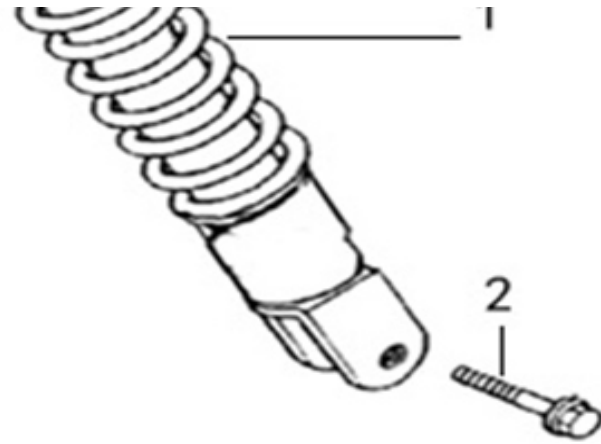
F16 = STAND COMP MAIN & SIDE STAND COMP

Page	Group					Code (U8)	Item	QTY
	Main	Sub-	Detail	Deta	Deta			
F16	1					50500-AFAP-9300	Big support	1
F16	2					50352-F8-9300	Large brace buffer rubber (hanger ru	1
F16	3					95014-ACAE-E000	SPG D MAIN STAND 95mm	1
F16	4					50530-AFAP-9000	Single brace	1
F16	5					90101-TW-E000	BOLT M10×1.25×25	1
F16	6					95015-LB-E000	SPG B1 SIDE STAND 105mm	1
F16	7					50503-DGW-9000	Large support shaft	1
F16	8					95801-08000-03	WASHER Ø8	1
F16	9					97001-16250	SPLIT PINØ1.6×25	1



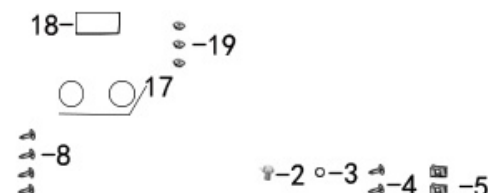
F17 = CUSHION ASSY RR

Page	Group					Code (U8)	Item	QTY
	Main	Sub-	Detail	Deta	Deta			
F17	1					52500-ALA2-9200	Rear shock absorber 290MM	1
F17	2					92201-10040-03	BOLT FLANGE M10*40	1
F17	3					92201-08032-03	BOLT FLANGE M8*32	1
F17	4					95401-10000-03	Hexagonal flange self-locking nut M10	1



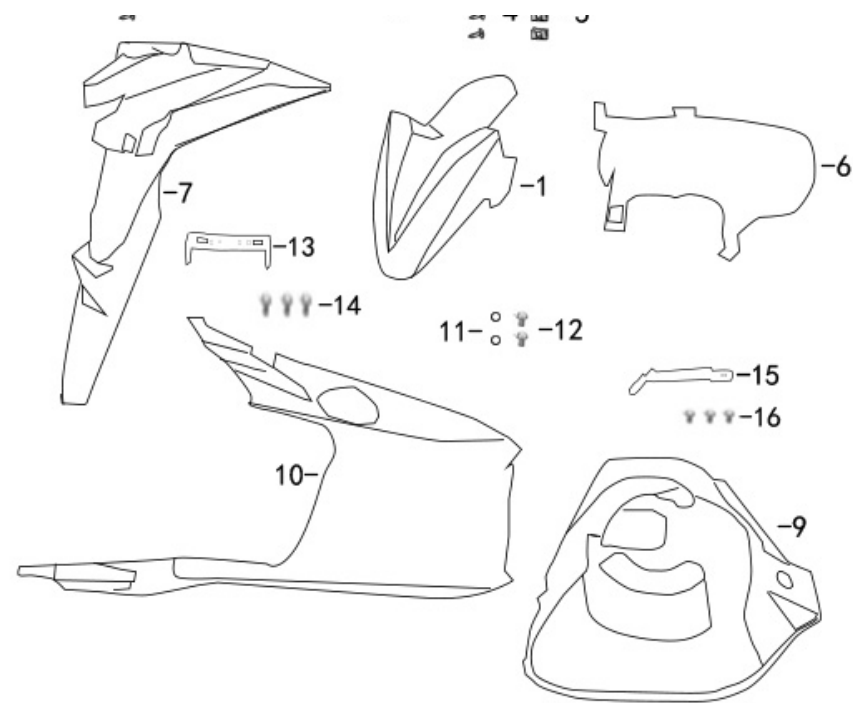
F18 = WINKER ASSY FR & VENTILATION GRID

Page	Group					Code (U8)	Item	QTY
	Main	Sub-	Detail	Deta	Deta			
F18	1					33450-BLA5-9000	Left turn signal	1
F18	2					33400-BLA5-9000	Right turn signal	1
F18	3					93401-42012-03	SCREW, ST4.2*12	12
F18	4					33700-AFAP-9000	The tail lamp assembly	1
F18	5					93401-48016-03	SCREW, ST4.8*16	2
F18	6					93401-42012-03	SCREW, ST4.2*12	2
F18	7					93401-42016-03	SCREW, ST4.2*16	1
F18	8					90601-F8-9000	NUT SPRING 4MM	2
F18	9					33720-AFAP-9000	After the license plate lamp	1
F18	10					93401-42012-03	SCREW, ST4.2*12	2
F18	11					83754-AFAP-9000	Tail lights under the cover	1

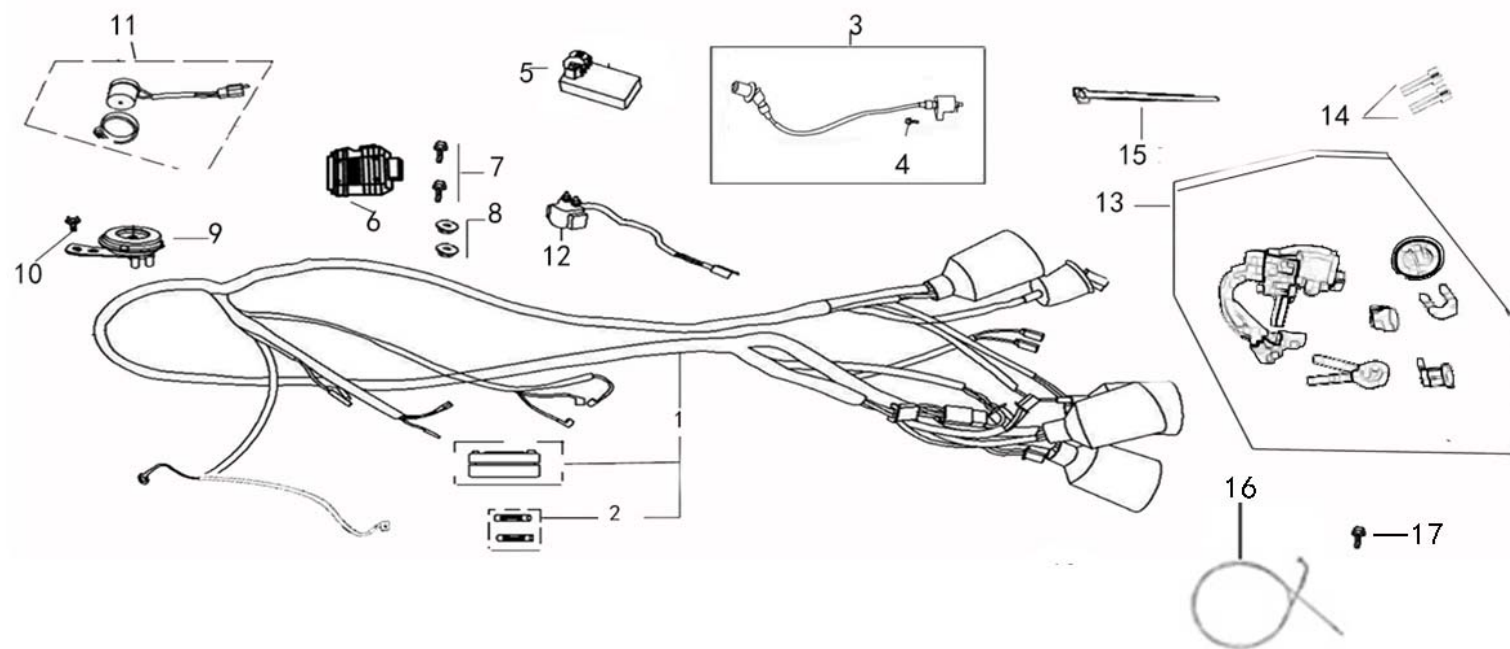


F19 = LIGHT ASSY RR COMB

Page	Group					Code (U8)	Item	QTY
	Main	Sub-	Detail	Deta	Deta			
F19	1					61100-AFAP-9000	Front wheel fender.	1
F19	2					92101-06012-03	BOLT FLANGE 6*12	1
F19	3					95801-06000-03	WANSHWE 6MM	1

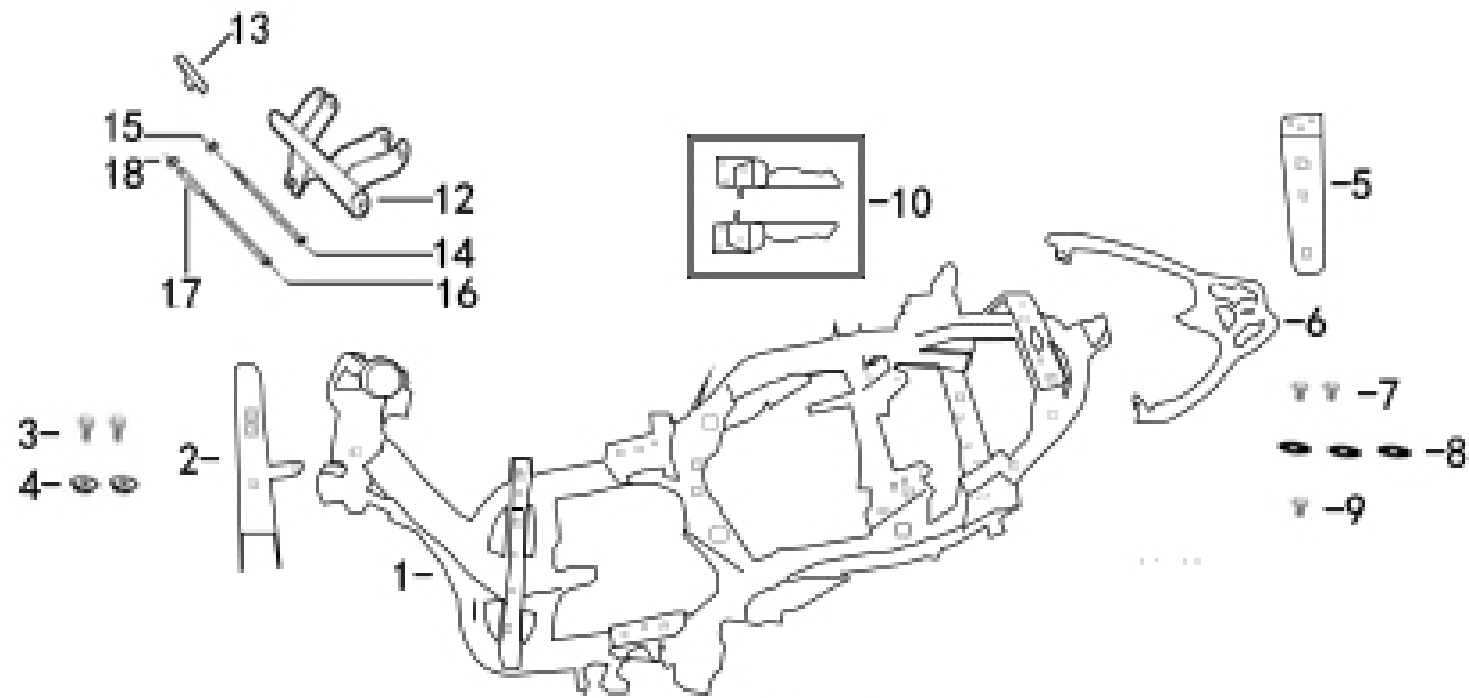


F19	4				93401-48016-03	SCREW, ST4.8*16	3
F19	5				90601-F8-9000	NUT SPRING 4MM	3
F19	6				80102-TS-9000	Rear wheel fender.	1
F19	7				80105-AFAP-9000	Rear fender	1
F19	8				93401-42012-03	SCREW, ST4.2*12	4
F19	9				50613-BLA5-9000	Front fender.	1
F19	10				50613-AFAP-9000	Frame fender.	1
F19	11				95801-06000-03	WANSHWE 6MM	2
F19	12				92101-06012-03	BOLT FLANGE 6*12	2
F19	13				84707-ZNW-9000	Back plate holder	1
F19	14				92101-06016-03	BOLT FLANGE 6*16	2
F19	15				80110-ALA1-9000	The right rear wheel fender bracket	1
F19	16				92101-06012-03	BOLT FLANGE 6*12	3
F19	17				33741-F8-E400	Side of the reflector	2
F19	18				33751-F8-E400	After the reflector	1
F19	19				95201-06000-03	NUT FLANGE 6MM	5



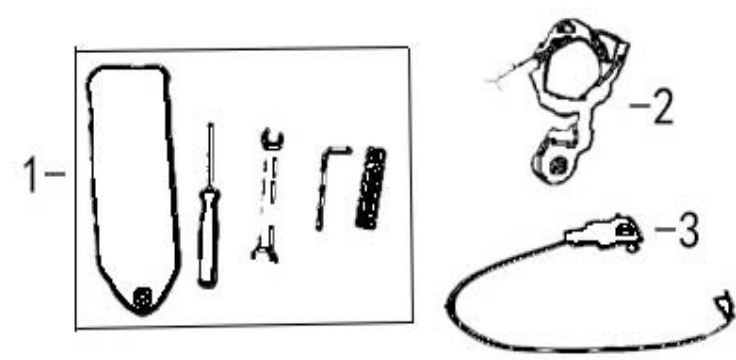
F20 = HARNESS WIRE

Page	Group					Code (U8)	Item	QTY
	Main	Sub-	Detail	Deta	Deta			
F20	1					32100-BLA5-9100	HARNESS WIRE	1
F20		2				99200-11500	Fuse	2
F20	3					3051A-DGW-9100	IGNITION COIL	1
F20	4					92401-06020-03	Hexagonal flange screw M6*20	1
F20	5					30410-DGW-E000	igniter	1
F20	6					31600-DGW-E000	Voltage regulator	1
F20	7					92101-06016-03	Hexagonal flange screw M6*16	2
F20	8					95201-06000-03	Hexagonal flange nut M6	2
F20	9					38110-XF-9000	horn	1
F20	10					92101-06012-03	Hexagonal flange screw M6*12	1
F20	11					38300-F8-9400	Flasher	1
F20	12					35850-F8-9000	Relay	1
F20	13					35010-AFAP-9002	Sleeve lock	1
F20	14					92501-06020-03	Hexagon socket screw M6*20	2
F20	15					90006-F8-9000	Tie	5
F20	16					77240-AFAP-9000	SEAT CUSHION LOCKING WIRE	1
F20	17					93201-05010-03	SCREW PAN. M5*10	1



F21 = BODY COMP FRAME

Page	Group					Code (U8)	Item	QTY
	Main	Sub-	Detail	Deta	Deta			
F21	1					50100-AFAP-9300	The frame	1
F21	2					50310-BLA5-9000	Front panel holder	1
F21	3					92101-06050-03	BOLT FLANGE 6*50	2
F21	4					95201-06000-03	NUT FLANGE 6MM	2
F21	5					50320-AFAP-9000	Fender bracket	1
F21	6					81200-AFAP-9100	Carrier (large)	1
F21	7					92201-08020-03	BOLT FLANGE 8*20	2
F21	8					95801-08000-03	WANSHWE 8MM	3
F21	9					92201-08045-03	BOLT FLANGE 8*45	1
F21	10					5071A-AFAP-9000	pedal	1SET
F21	11					50350-AFAP-9200	hanger	1
F21	12					50353-ABA9-9000	RUBBER STOPPER	1
F21	13					50355-AFA9-9000	AXLE ENG HANGER B	1
F21	14					95401-10000-03	NUT U FLANGE 10MM	1
F21	15					50356-DGW-9100	AXLE ENG HANGER A	1
F21	16					50360-DGW-9000	COLLER HANGER	1
F21	17					95401-10000-03	NUT U FLANGE 10MM	1



F22 = RR BOX ASSY (SELECT) & full set of decals & full set of standard parts

Page	Group					Code (U8)	Item	QTY
	Main	Sub-	Detail	Deta	Deta			
F22	1					89010-F8-9000	On-board tools	1
F22	2					88140-F8-9000	Single support flameout switch	1
F22	3					88210-AEA2-9000	USB charging interface	1
F22	/					10000-SQ5A-9000	Engine	1
F22	/					1610K-DGW-9100-A	CARBURETOR	1
F22	/					86000-00001	Full set of decals	1
F22	/					8150A-F8-9000	Tail box	1

