

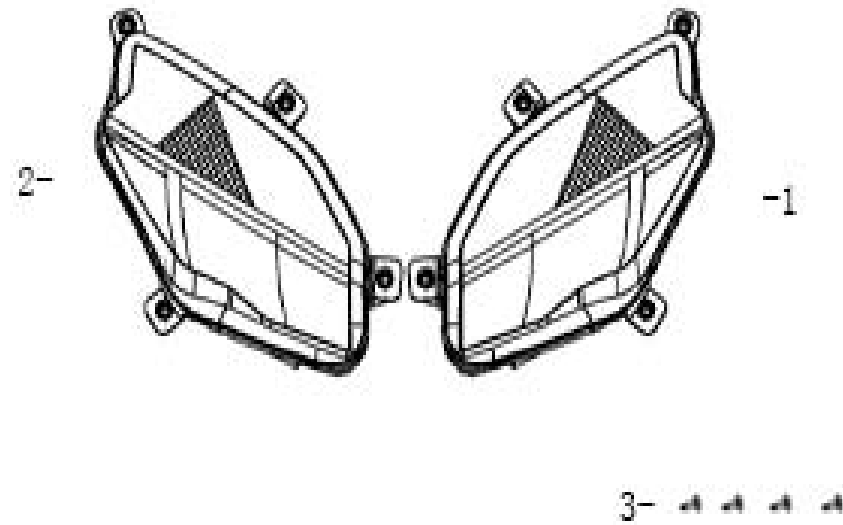


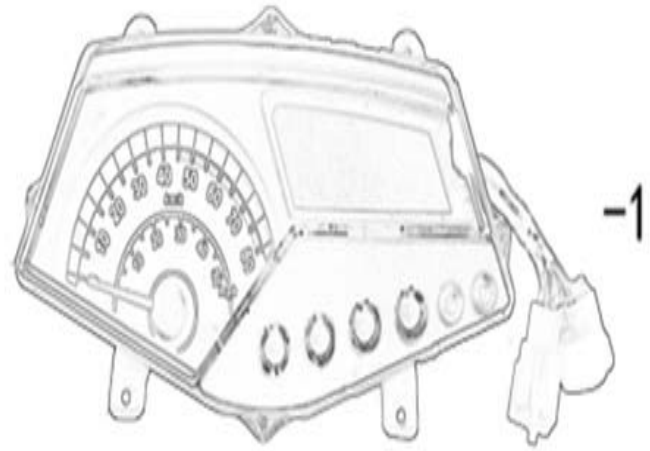
Canoe 150 Part List



F01 = LIGHT ASSY HEAD

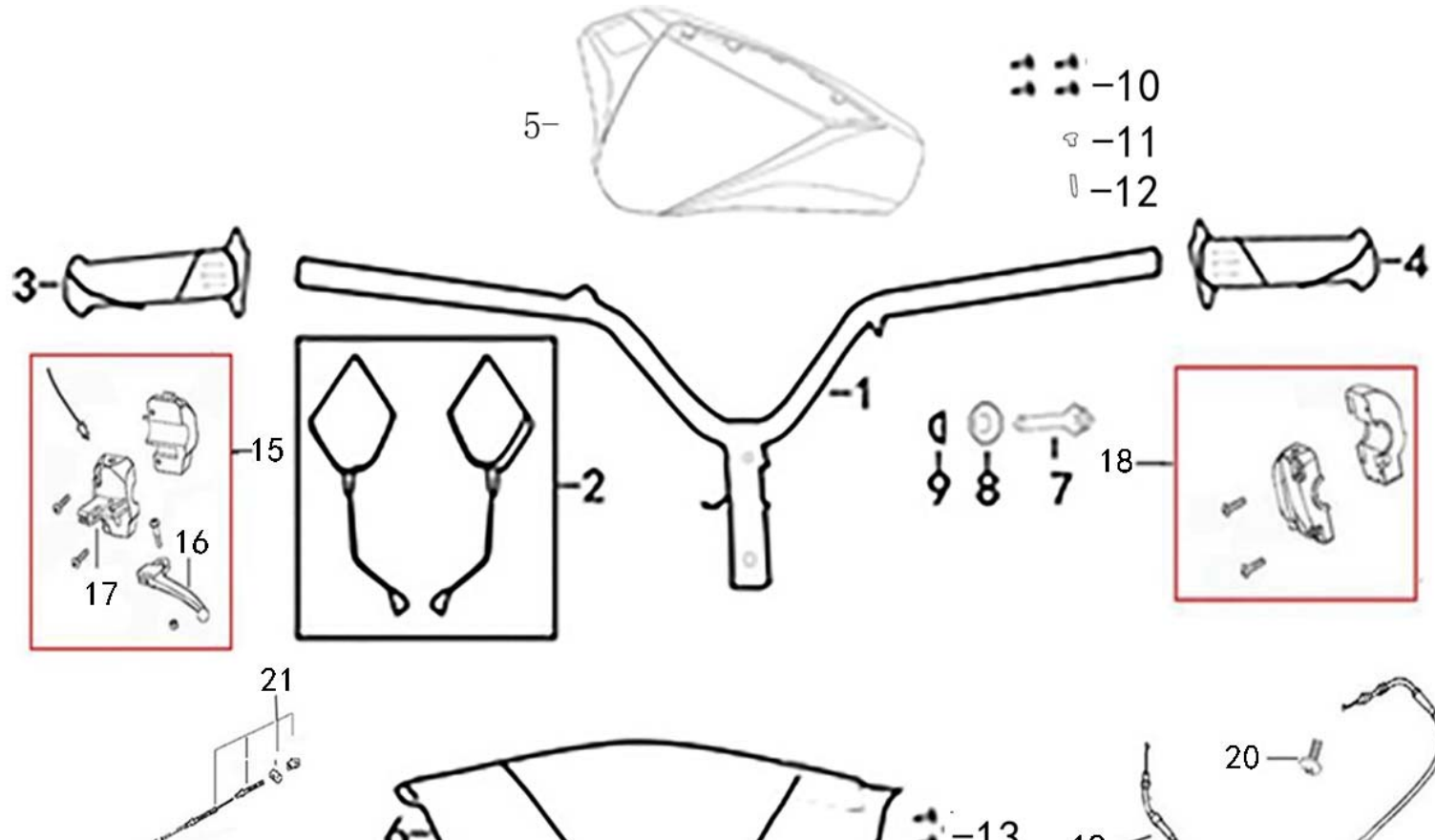
Pa ge	Group					Code (U8)	Item	QTY
	Main	Sub-	Detail	Deta	Deta			
F01	1					33200-BLA5-9000	Left front headlamp	1
F01	2					33100-BLA5-9000	Right front headlamp	1
F01	3					93401-42012-03	SCREW, ST4.2*12	8





F02 = SPEED METER ASSY

Page	Group					Code (U8)	Item	QTY
	Main	Sub-	Detail	Deta	Deta			
F02	1					37200-BLA5-9000	Instrument	1
F02	2					93401-42012-03	SCREW, ST4.2*12	4

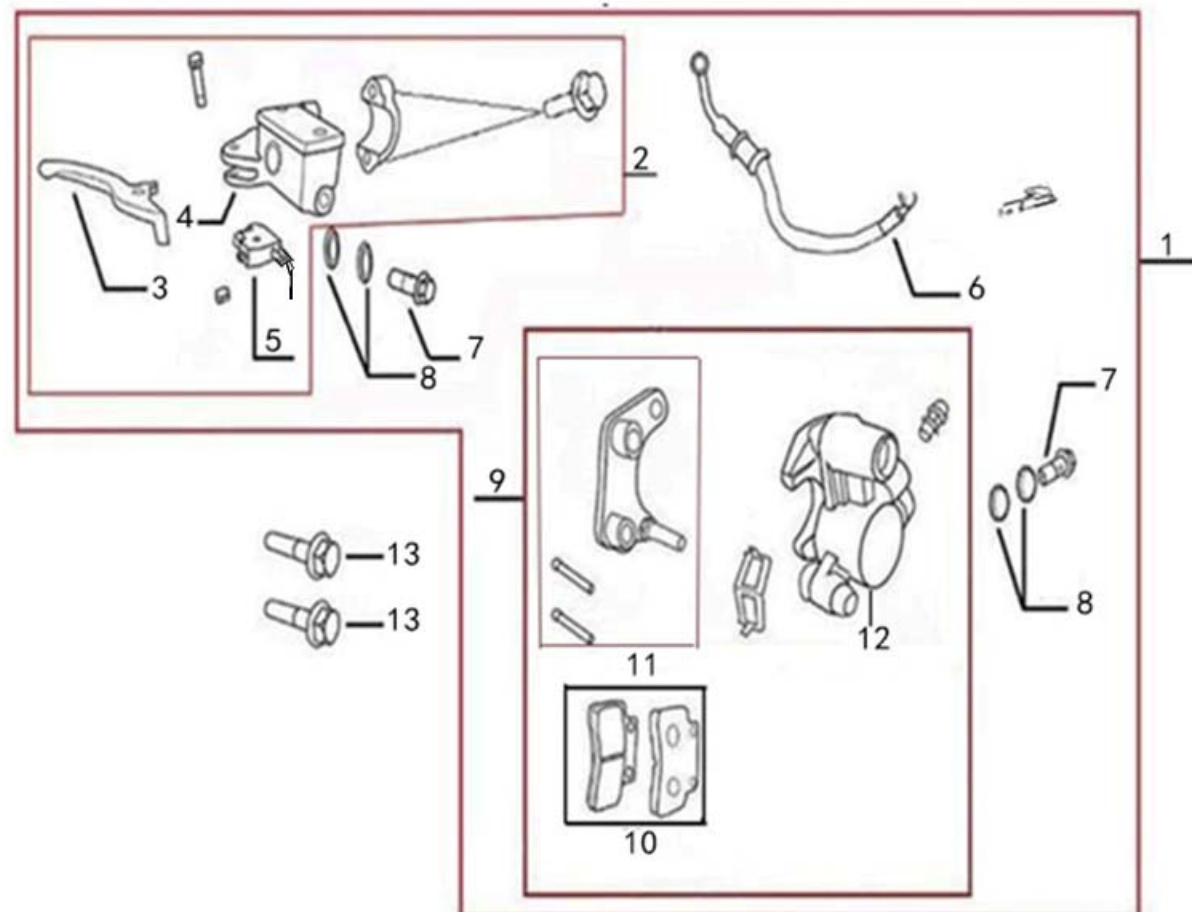


F03 = HANDLE COMP STRG&MIRROR ASSY BACK

Page	Group					Code (U8)	Item	QTY
	Main	Sub-	Detail	Deta	Deta			
F03	1					53100-BLA5-9000	The direction of the	1
F03	2					8811A-LF-E000	Rear view mirror	1SET
F03	3					53140-QG-9100	Come on hand to set	1
F03	4					53166-QG-9100	The set of left hand	1
F03	5					53206-BLA5-9000	Instrument cover	1
F03	6					53205-BLA5-9000	Instrument lower cover	1
F03	7					92201-10045-03	BOLT FLANGE 10*45	1
F03	8					95401-10000-03	NUT, M10	1
F03	9					53125-F8-9000	COLLAR HANDLE SET	1
F03	10					93401-42012-03	SCREW, ST4.2*12	5
F03	11					90099-AGA1-9000	Expansion screw	1
F03	12					90097-AGA1-9000	Expansion screw sleeve	1
F03	13					93401-42012-03	SCREW, ST4.2*12	2
F03	14					94001-06016-03	BOLT FLANGE 6*16	1
F03	15					3520A-B08-9000	SW ASSY LB HNDL	1
F03		16				53176-B08-9000	LEVER L STRG HANDLE	1
F03		17				35340-GZ-9000	SW ASSY FR STOP	1
F03	18					3515A-AAR8-9000	SW ASSY RH HNDL	1
F03	19					17910-ABA4-9000	Throttle line	1

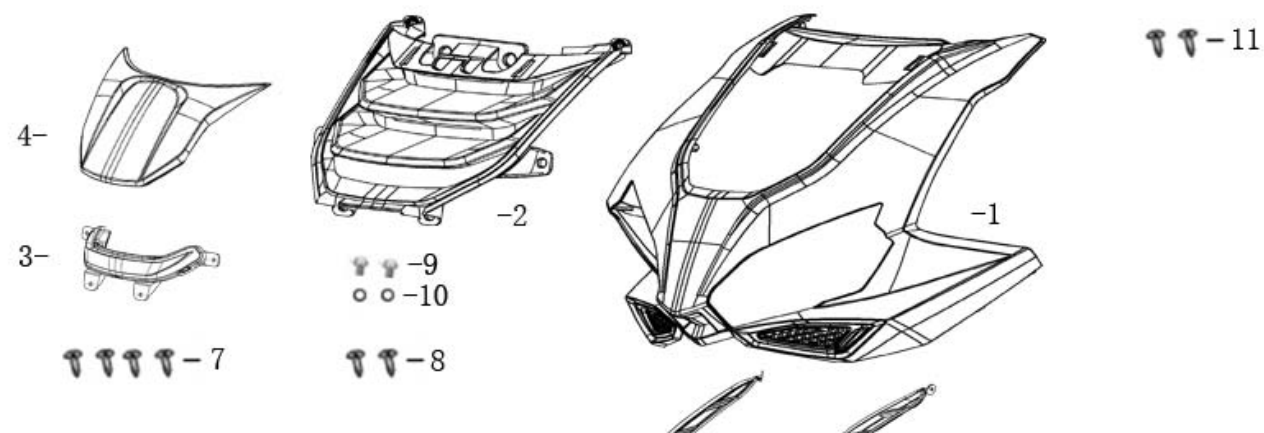


F03	20				93201-05012-03	SCREW PAN. M5*12	1
F03	21				43450-KY-9000-B	THE BRAKE LINE	1



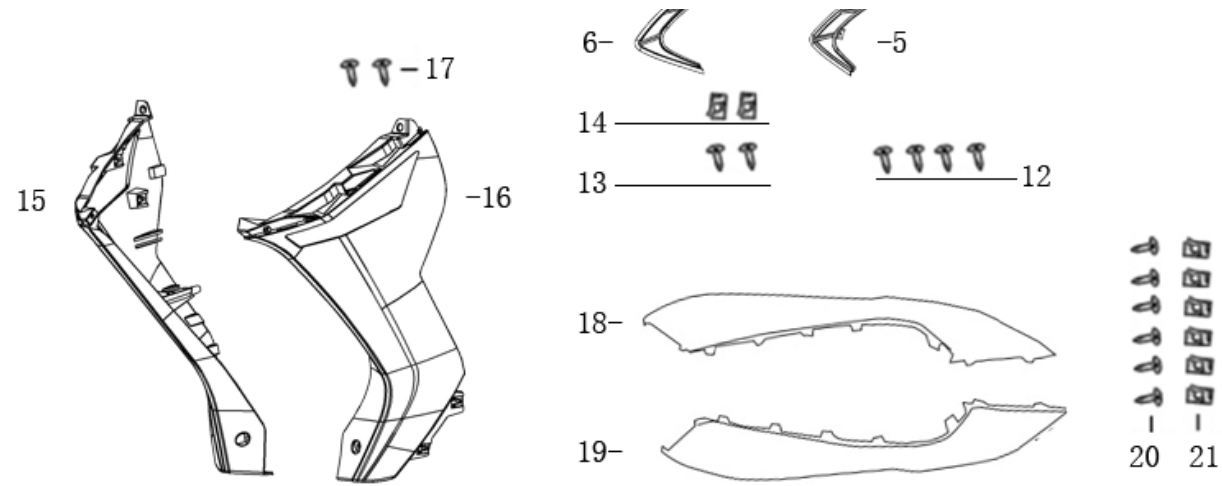
F04 = SUB HARNESS SET FR M/C COMP

Pa ge	Group					Code (U8)	Item	QTY
	Main	Sub-	Detail	Deta	Deta			
F04	1					4550A-BLA5-9000	SUB HARNESS SET FR M/C COMP	1
F04		2				45500-BLA5-9000	SUB HARNESS SET FR M/C	1
F04			3			53175-AEA8-9000	HANDLE R	1
F04			~			90115-XSG-9000	6*32	1
F04			~			95001-06000-03	M6	1
F04			4			45501-BLA5-9000	CRLINDER BODY	1
F04			5			10099-F8-9000	SHUT-OFF BLOCK CONSTITUTE FR	1
F04			~			46518-F8-9000	5*10	1
F04			~			45502-ABA9-9000	Front disc brake upper pump cylinder fixing base	1
F04			~			92401-06022-03	BOLT FLANGE 6*22 (G)	2
F04		6				45126-AEA8-9000	HOSE ASSY FR BRK	1
F04		7				90045-F8-9000	OIL BOLT 10*22	2
F04		8				90046-F8-9000	WASHER OIL BOLT	4
F04		9				45200-AEA8-9000	CALIPER ASSY FR	1
F04			10			4510A-ACAE-9000	PAD COMP	1
F04			11			45204-AEA8-9000	Front disc brake lower pump mounting bracket	1
F04			12			45201-AEA8-9000	Front disc brake lower pump auxiliary oil cylinder device	1
F04	13					92201-08035-03	BOLT FLANGE 8*35	2

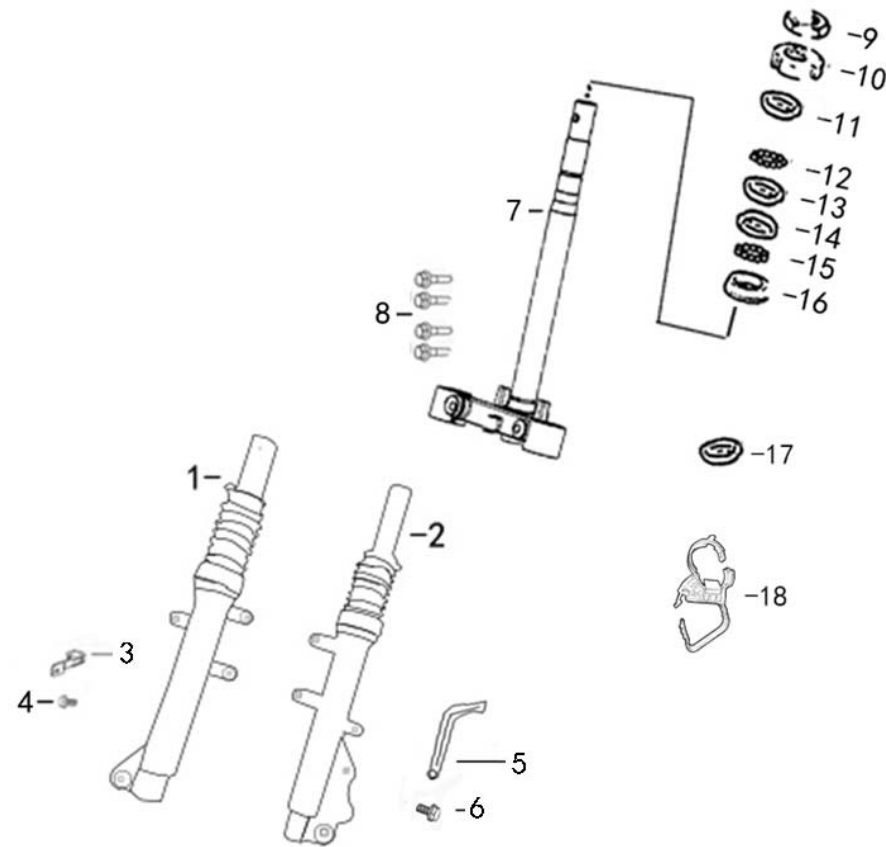


F05 = Plastic parts group

Pa ge	Group					Code (U8)	Item	QTY
	Main	Sub-	Detail	Deta	Deta			
F05	1					64302-BLA5-9000	Front circumference	1
F05	2					64326-BLA5-9000	Front wall trim	1
F05	3					33550-BLA5-9000	Front position lamp	1
F05	4					64301-BLA5-9000	front panel	1
F05	5					64203-BLA5-9000	Front left trim	1
F05	6					64303-BLA5-9000	Front wall right trim	1
F05	7					93401-48012-03	SCREW, ST4.8*12	4
F05	8					93401-42012-03	SCREW, ST4.2*12	2
F05	9					92101-06016-03	BOLT FLANGE 6*16	2
F05	10					95801-06000-03	WANSHWE 6MM	2

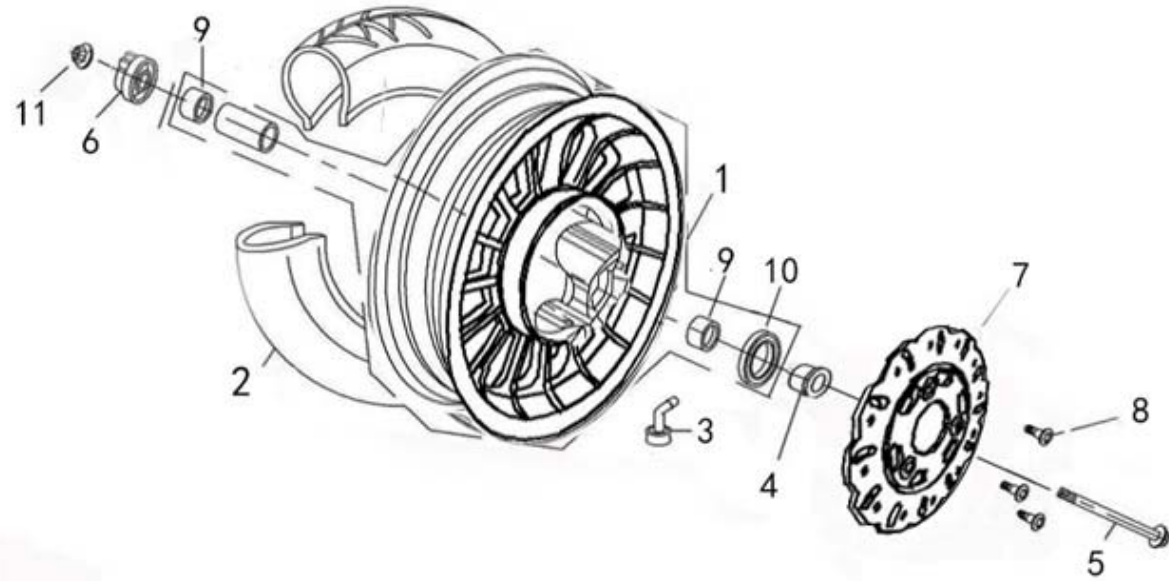


F05	11				93401-42012-03	SCREW, ST4.2*12	2
F05	12				93401-42012-03	SCREW, ST4.2*12	4
F05	13				93401-48016-03	SCREW, ST4.8*16	2
F05	14				90601-F8-9000	NUT SPRING 4MM	2
F05	15				64305-BLA5-9000	Front right guard	1
F05	16				64306-BLA5-9000	Front left guard	1
F05	17				93401-42012-03	SCREW, ST4.2*12	2
F05	18				64305-AFAP-9000	Right bead	1
F05	19				64306-AFAP-9000	Left bead	1
F05	20				93401-48016-03	SCREW, ST4.8*16	6
F05	21				90601-F8-9000	NUT SPRING 4MM	6



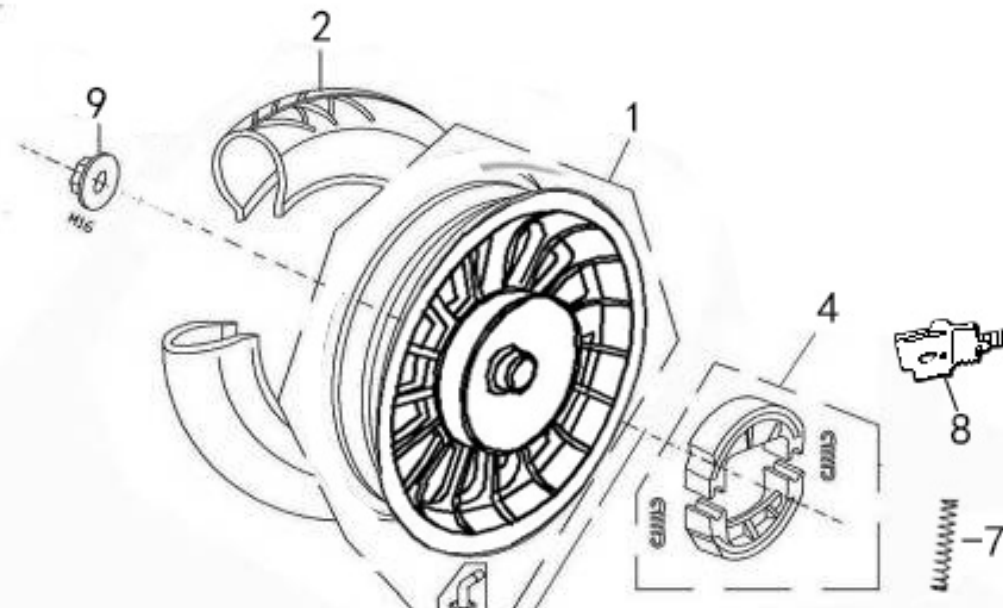
F06 = Lower connection board & Steel bowl

Pa ge	Group					Code (U8)	Item	QTY
	Main	Sub-	Detail	Deta	Deta			
F06	1					51400-BLA5-9000	FORK SET R FR	1
F06	2					51500-BLA5-9000	FORK SET L FR	1
F06	3					43128-F8-9000	STAY CLAMPER FR BRK CABLE	1
F06	4					92501-06012-03	BOLT FLANGE 6*12	1
F06	5					43128-B08-9000	STAY HOSE	1
F06	6					92501-06012-03	BOLT FLANGE 6*12	1
F06	7					53200-BLA5-9000	Bottom allied board	1
F06	8					92201-08040-03	BOLT FLANGE 8*40	4
F06	9					50306-B08-9000	The main rod locking nut	1
F06	10					53221-B08-9000	Locking teeth	1
F06	11					53222-B08-9000	Dust cover	1
F06	12					53213-B08-9000	BALL STEEL	1
F06	13					50301-B08-9000	RACE UP STRG BALL	1
F06	14					50302-B08-9000	RACE (STRG BOT) BALL	1
F06	15					53214-B08-9000	BALL STEEL	1
F06	16					53212-B08-9000	RACE (STRG BOTTOM) CONE	1
F06	17					50307-AFA1-9000	Steel bowl rubber sheath	1
F06	18					94591-AFA1-9000	Nylon clamp for faucet	1



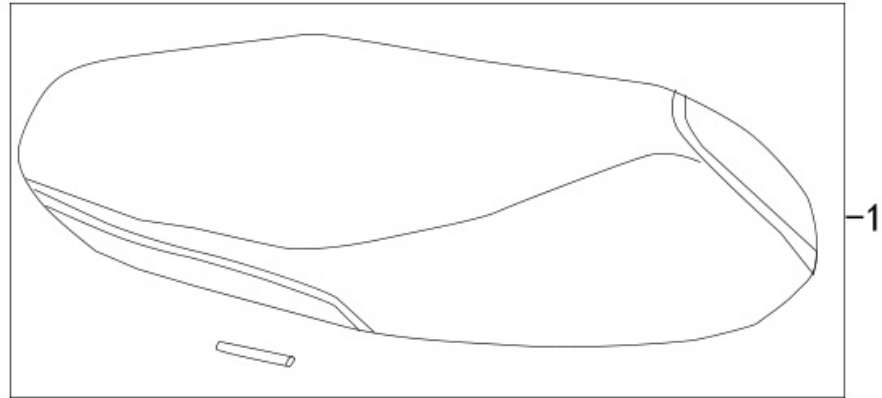
F07 = WHEEL SET FR

Pa ge	Group					Code (U8)	Item	QTY
	Main	Sub-	Detail	Deta	Deta			
F07	1					44600-ALA1-9000	RIM FR WHEEL (MT2.15*10)	1
F07	2					44710-DGW-9000-C	TIRE 3.50-10	1
F07	3					42753-DGW-9000	TIRE INFLATOR	1
F07	4					44311-AFAP-9000	COLLAR FR WHEEL SIDE Φ10×22	1
F07	5					44301-XGW-9000	AXLE FR WHEEL M10×198	1
F07	6					44800-BLA5-9000	ACTUATOR	1
F07	7					45121-AEA8-9000	DISK FR BRAKE 155mm	1
F07	8					93601-08025-02	Disc brake disc mounting bolt	3
F07		9				96002-63000	FRONT AXLE BEARING 6300RS	2
F07		10				91001-KY-9000	FRONT AXLE SLEEVE OIL SEAL 20*35*7	1
F07	11					95401-10000-03	M10NUT U FLANGE 10MM	1



F08 = WHEEL COMP RR CAST

Pa ge	Group					Code (U8)	Item	QTY
	Main	Sub-	Detail	Deta	Deta			
F08	1					42600-DGW-9300	AFTER THE ALUMINUM WHEEL (MT2.15*10)	1
F08	2					44710-DGW-9000-C	TIRE 3.50-10	1
F08	3					42753-DGW-9000	VALVE	1
F08	4					4312A-DGW-E000	THE REAR BRAKE SHOE BLOCK	1
F08	5					43410-DGW-9002	THE REAR BRAKE ARM	1
F08	6					43141-DGW-9002	THE REAR BRAKE ROCKER ARM SHAFT	1
F08	7					43142-DGW-9000	THE REAR BRAKE ARM RETURN SPRING	1
F08	8					43143-DGW-9000	THE REAR BRAKE RUBBER LINING	1
F08	9					95501-16000-03	NUT U FLANGE 16MM	1

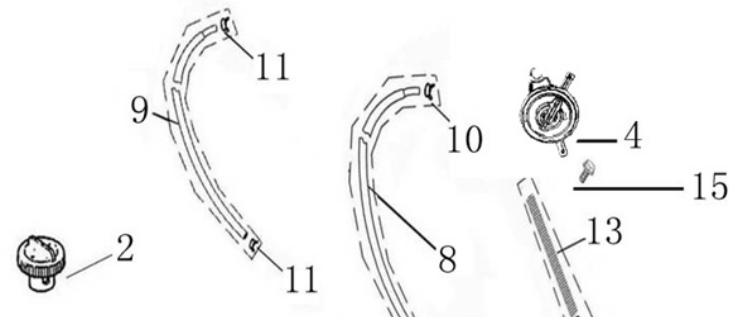


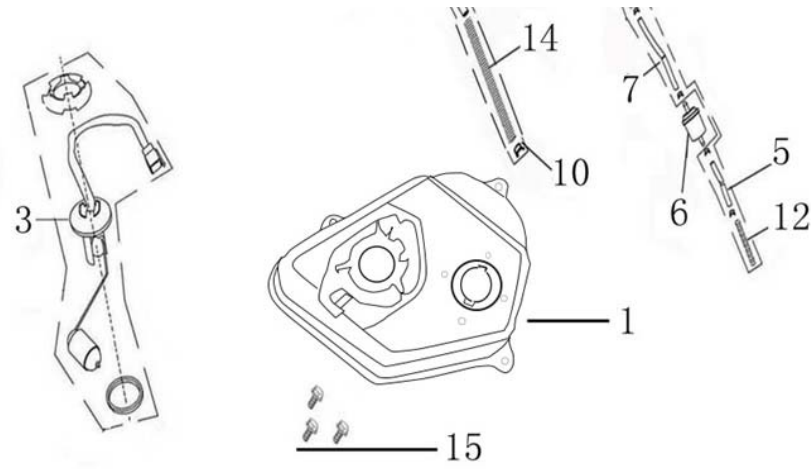
F09 = SEAT ASSY

Page	Group					Code (U8)	Item	QTY
	Main	Sub-	Detail	Deta	Deta			
F09	1					77200-AFAP-9100-RC01	Seat cushion (including seat cushion rocke	1

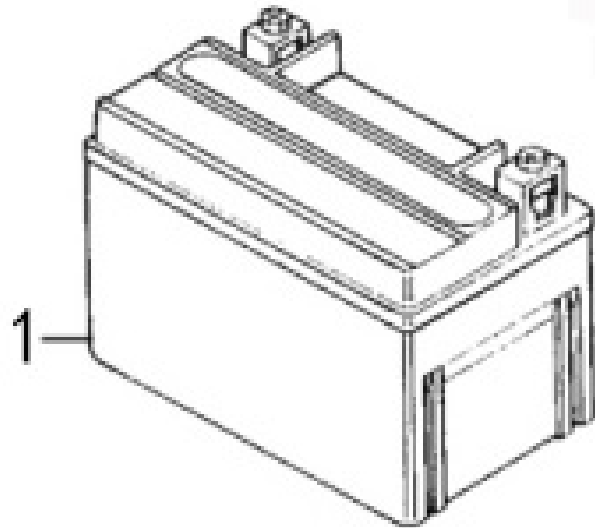
F10 = FUEL UNIT ASSY

Page	Group					Code (U8)	Item	QTY
	Main	Sub-	Detail	Deta	Deta			
F10	1					17500-AFAP-9000	The fuel tank	1
F10	2					17620-F8-9000	The cap	1
F10	3					3780A-ADA9-9000	Oil level sensor assembly	1SET
F10	4					16950-TS-9000	Separate self-priming switch	1
F10	5					1768A-ZNW-9000	Oil filter inlet pipe 120mm	1
F10	6					18658-F8-9000	The filter	1
F10	7					1768C-ZNW-9000	Oil filter flowline 120mm	1





F10	8					1768G-ALA6-9000	Self-priming switch flowline 300 mm	1
F10	9					1768B-AAR8-9200	Negative pressure pipe 200mm	1
F10	10					19411-F8-9000	Steel pickup spring Φ 8.5	6
F10	11					19414-F8-9000	Steel pickup spring Φ 7.5	2
F10	12					90016-DGW-9100	Spring 85 mm tubing protection	1
F10	13					90016-DGW-9100	Spring 85 mm tubing protection	1
F10	14					90016-LB-9000	Spring 230 mm tubing protection	1
F10	15					92101-06016-03	BOLT FLANGE 6*16	4

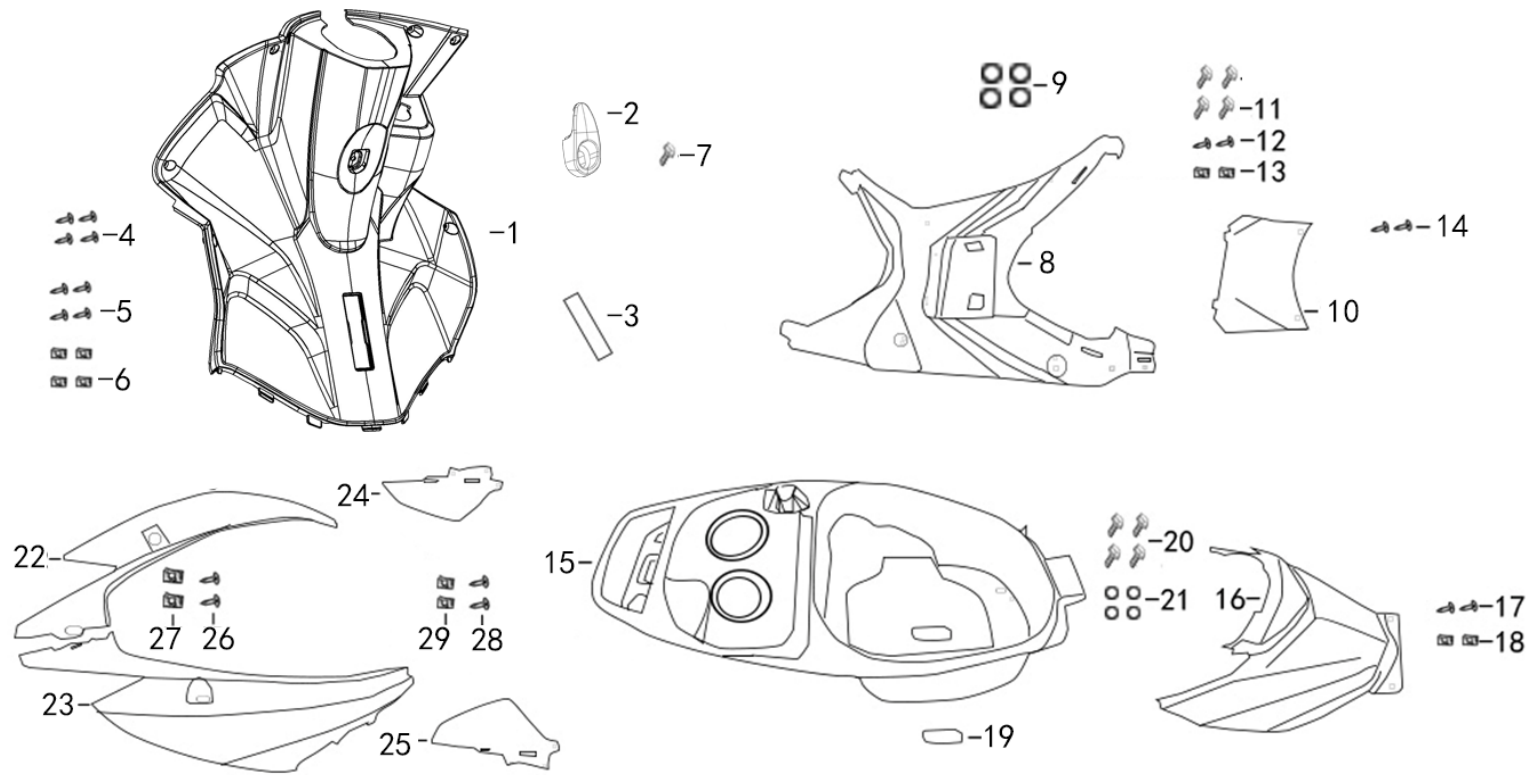


F11 = BATTERY YTX7A-BS

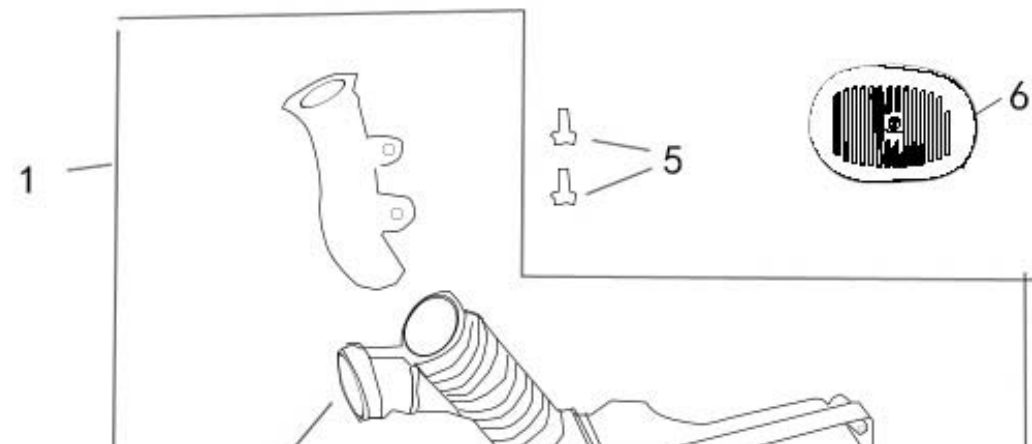
Pa ge	Group					Code (U8)	Item	QTY
	Main	Sub-	Detail	Deta	Deta			
F11	1					31500-F8-A201	BATTERY YTX7A-BS	1

F12 = BOX LUGGAGE ASSY & REAR CARRIER

Pa ge	Group					Code (U8)	Item	QTY
	Main	Sub-	Detail	Deta	Deta			
F12	1					81131-BLA5-9000	hold-all	1

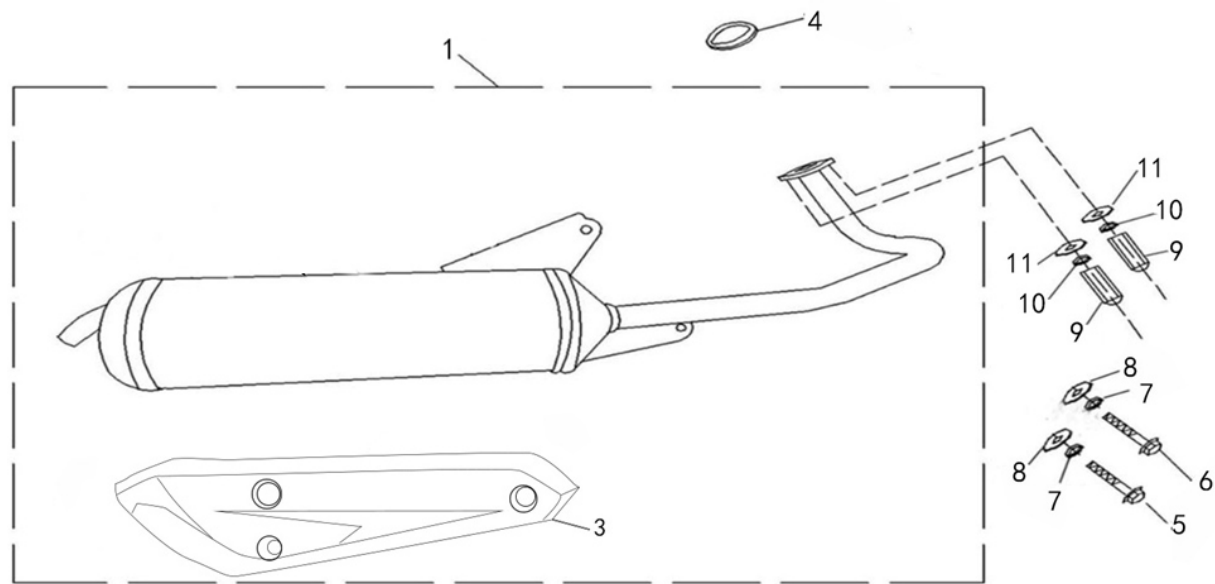
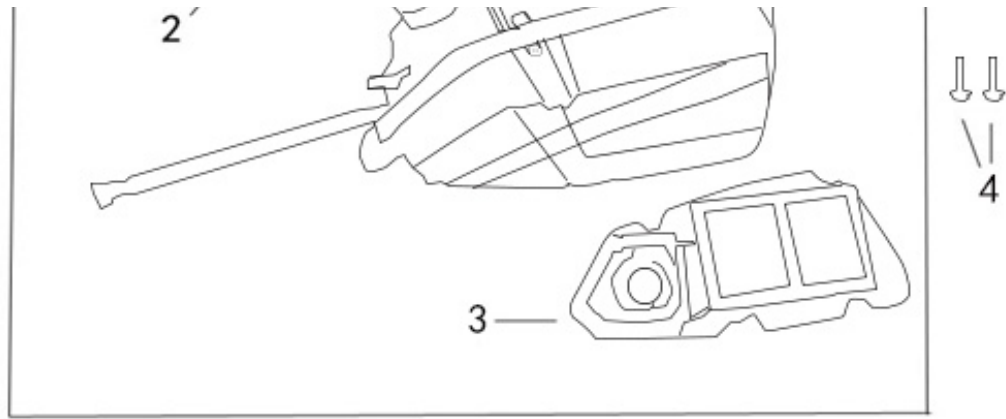


F12	2				83760-BLA5-9000	Helmet hook	1
F12	3				81142-AFAP-9000	Number cover	1
F12	4				93401-42012-03	SCREW, ST4.2*12	7
F12	5				93401-48016-03	SCREW, ST4.8*16	4
F12	6				90601-F8-9000	NUT SPRING 4MM	4
F12	7				92101-06020-03	BOLT FLANGE 6*20	1
F12	8				64310-AFAP-9000	The pedals	1
F12	9				64333-AFAP-9000	The pedals plug	4
F12	10				50326-AFAP-9000	Electric bottle caps	1
F12	11				92101-06016-03	BOLT FLANGE 6*16	4
F12	12				93401-48016-03	SCREW, ST4.8*16	2
F12	13				90601-F8-9000	NUT SPRING 4MM	2
F12	14				93401-42012-03	SCREW, ST4.2*12	2
F12	15				81250-AFAP-9000	Glove box	1
F12	16				83750-AFAP-9000	Glove box front cover.	1
F12	17				93401-48016-03	SCREW, ST4.8*16	2
F12	18				90601-F8-9000	NUT SPRING 4MM	2
F12	19				81257-AFAP-9000	Glove box inside the small cover	1
F12	20				92101-06016-03	BOLT FLANGE 6*16	4
F12	21				95801-06000-03	WANSHWE 6MM	4
F12	22				83600-AFAP-9000	Left trim panel	1
F12	23				83500-AFAP-9000	Right trim panel	1
F12	24				83604-AFAP-9000	Left side trim panel	1
F12	25				83605-AFAP-9000	Right side panel	1
F12	26				93401-48016-03	SCREW, ST4.8*16	2
F12	27				90601-F8-9000	NUT SPRING 4MM	2
F12	28				93401-48016-03	SCREW, ST4.8*16	2
F12	29				90601-F8-9000	NUT SPRING 4MM	2



F14 = AIR/C ASSY

Pa ge	Group					Code (U8)	Item	QTY
	Main	Sub-	Detail	Deta	Deta			
F14	1					17200-AFAP-9003	Air filter assembly	1
F14		2				90652-DGW-9000	Air filter clamp	1
F14		3				17211-AFAP-9000	Air filter element	1
F14	4					92401-06025-03	BOLT FLANGE 6*25	2
F14	5					92101-06016-03	BOLT FLANGE 6*16	2
F14	6					11345-FA-9000	Air suction pipe assembly	1

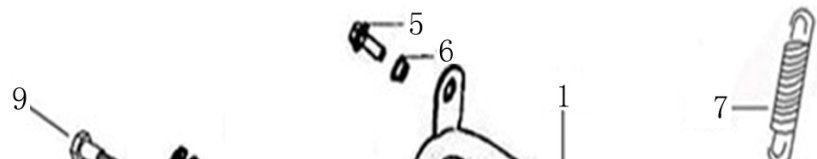


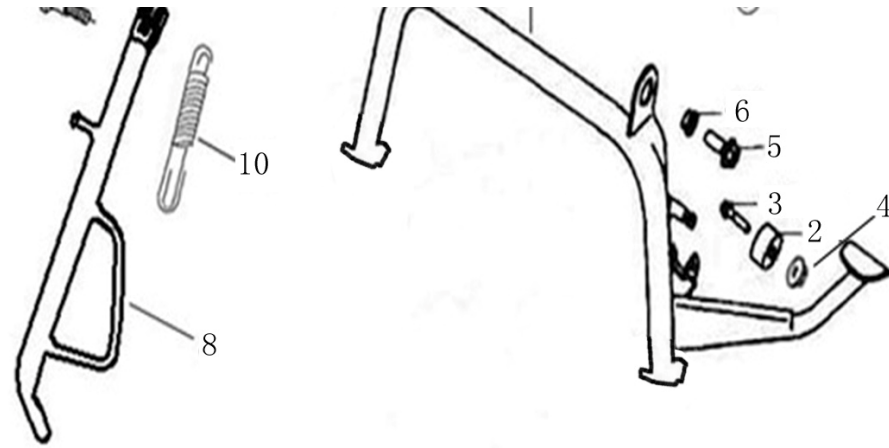
F15 = MUFFLER ASSY EXH

Pa ge	Group					Code (U8)	Item	QTY
	Main	Sub-	Detail	Deta	Deta			
F15	1					1830A-ABA4-9000-A	MUFFLER ASSY EXH (No catalyst)	1
F15		3				18318-ABA4-9000	PROTECTOR MUFFLER	1
F15	4					18291-F8-9000	Muffler gasket	1
F15	5					92201-08065-03	BOLT FLANGE M8X65	1
F15	6					92201-08055-03	BOLT FLANGE M8X55	1
F15	7					95901-08000-03	SPY WANSHWE 8MM	2
F15	8					95801-08000-03	WANSHWE 8MM	2
F15	9					90201-F8-9000	NUT (HEX) CAP 6MM	2
F15	10					95901-06000-03	SPY WANSHWE 6MM	2
F15	11					95801-06000-03	WANSHWE 6MM	2

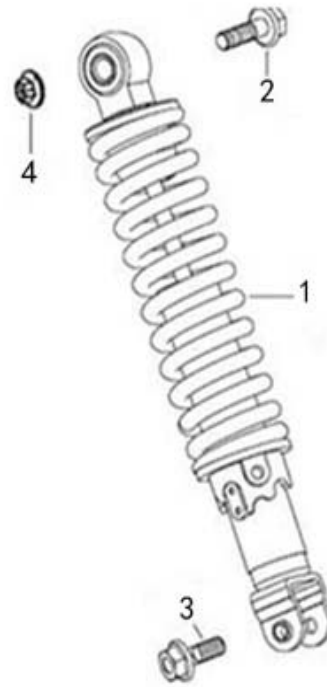
F16 = STAND COMP MAIN & SIDE STAND COMP

Pa ge	Group					Code (U8)	Item	QTY
	Main	Sub-	Detail	Deta	Deta			
F16	1					50500-AFAP-9200	STAND COMP MAIN	1
F16	2					50505-F8-9000	STOPPER RUBBER	1
F16	3					93002-06028-03	BOLT FLANGE 6*28 (G)	1



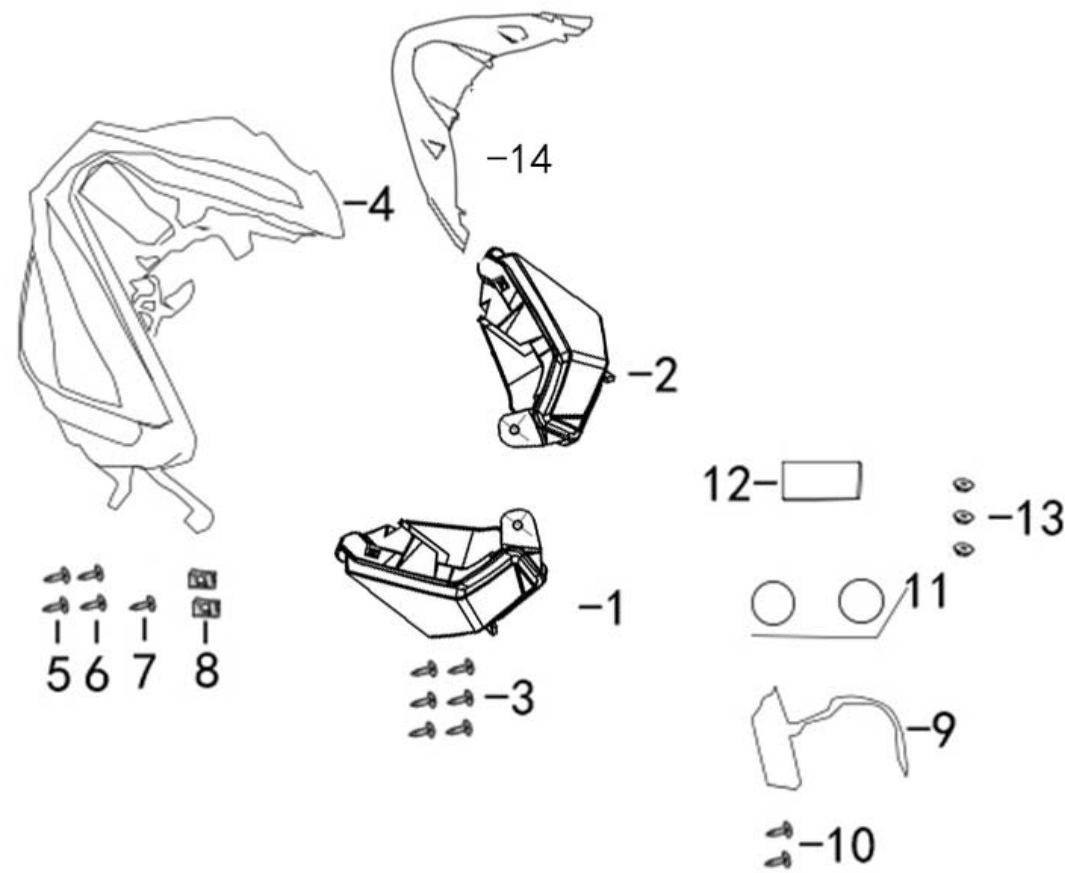


F16	4				95201-06000-03	NUT FLANGE 6MM	1
F16	5				92201-10025-03	BOLT FLANGE 10*25	2
F16	6				50502-F8-9000	COLLAR MAIN STAND	2
F16	7				95014-ACAE-E000	SPG D MAIN STAND	1
F16	8				50530-AFAP-9000	SIDE STAND COMP	1
F16	9				90101-F8-9000	SCREW SIDE STAND PIVOT	1
F16	10				95015-LB-E000	SPG B1 SIDE STAND	1



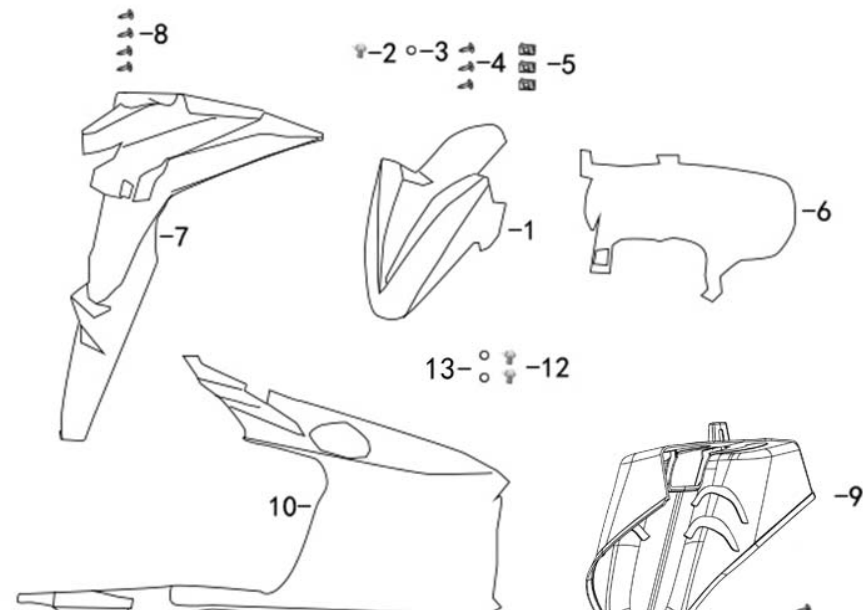
F17 = CUSHION ASSY RR

Pa ge	Group					Code (U8)	Item	QTY
	Main	Sub-	Detail	Detail	Detail			
F17	1					52500-AFAP-9200	Rear shock absorber 290mm	1
F17	2					92201-10040-03	BOLT FLANGE M10*40	1
F17	3					92201-08032-03	BOLT FLANGE M8*32	1
F17	4					95401-10000-03	Hexagonal flange self-locking nut M10	1



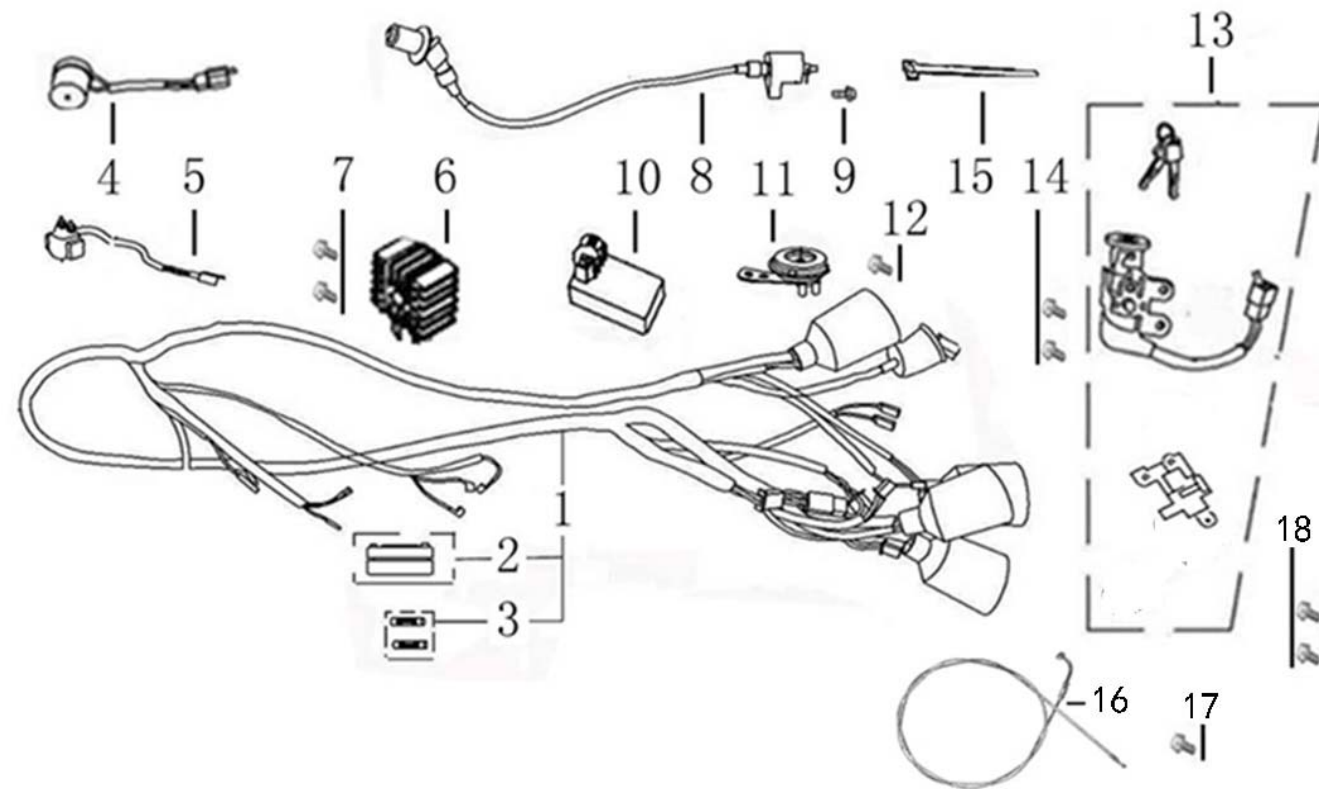
F18 = WINKER ASSY FR & VENTILATION GRID

Pa ge	Group					Code (U8)	Item	QTY
	Main	Sub-	Detail	Deta	Deta			
F18	1					33450-BLA5-9000	Left turn signal	1
F18	2					33400-BLA5-9000	Right turn signal	1
F18	3					93401-42012-03	SCREW, ST4.2*12	12
F18	4					33700-AFAP-9000	The tail lamp assembly	1
F18	5					93401-48016-03	SCREW, ST4.8*16	2
F18	6					93401-42012-03	SCREW, ST4.2*12	2
F18	7					93401-42016-03	SCREW, ST4.2*16	1
F18	8					90601-F8-9000	NUT SPRING 4MM	2
F18	9					33720-AFAP-9000	After the license plate lamp	1
F18	10					93401-42012-03	SCREW, ST4.2*12	2
F18	11					33741-F8-E000	Side of the reflector	2
F18	12					33751-F8-E000	After the reflector	1
F18	13					95201-06000-03	NUT FLANGE 6MM	3
F18	14					83754-AFAP-9000	Tail lights under the cover	1



F19 = LIGHT ASSY RR COMB

Pa ge	Group					Code (U8)	Item	QTY
	Main	Sub-	Detail	Deta	Deta			
F19	1					61100-AFAP-9000	Front wheel fender.	1
F19	2					92101-06012-03	BOLT FLANGE 6*12	4
F19	3					95801-06000-03	WANSHWE 6MM	4
F19	4					93401-48016-03	SCREW, ST4.8*16	3
F19	5					90601-F8-9000	NUT SPRING 4MM	3
F19	6					80102-AFAP-9000	Rear wheel fender.	1
F19	7					80105-AFAP-9000	Rear fender	1
F19	8					93401-42012-03	SCREW, ST4.2*12	4
F19	9					50613-BLA5-9000	Frame fender upper	1
F19	10					50613-AFAP-9000	Frame fender.	1
F19	11					93401-42012-03	SCREW, ST4.2*12	3
F19	12					92101-06012-03	BOLT FLANGE 6*12	2
F19	13					95801-06000-03	WANSHWE 6MM	2



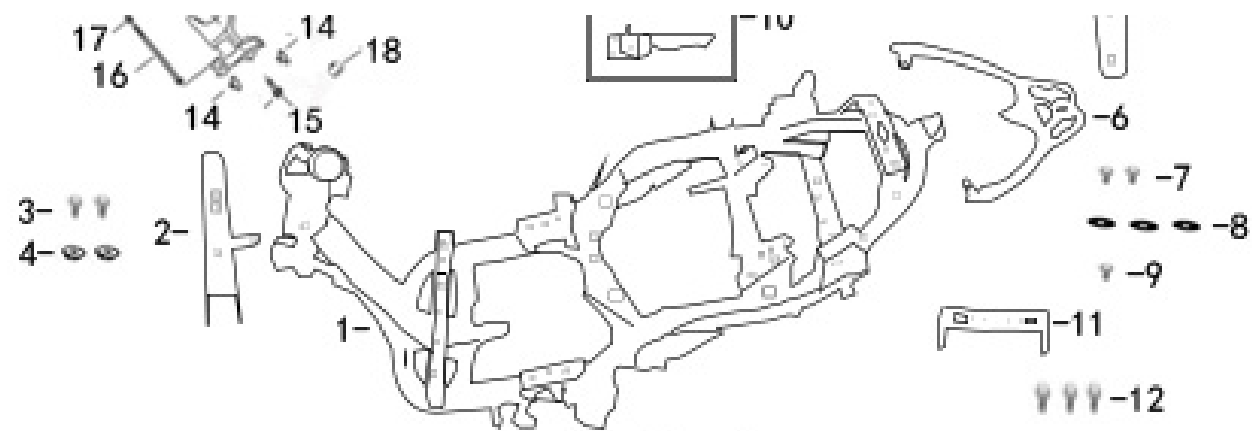
F20 = HARNESS WIRE

Page	Group					Code (U8)	Item	QTY
	Main	Sub-	Detail	Deta	Deta			
F20	1					32100-BLA5-9000	HARNESS WIRE	1
F20		2				38205-XF-9000	CASE FUSE	1
F20		3				99200-11500	FUSE 15A	2
F20	4					38300-F8-9400	RELAY ASSY WINKER	1
F20	5					35850-F8-9000	SET START MAG ASSY	1
F20	6					31600-F8-9000	REG REC COMP	1
F20	7					92101-06016-03	BOLT FLANGE 6*16	2
F20	8					3051A-LKA1-9000	COIL ASSY IGN	1
F20	9					92401-06020-03	BOLT FLANGE 6*20	1
F20	10					30410-AAA3-E000	speed converter	1
F20	11					38110-XF-9000	HORN COMP (HIGH)	1
F20	12					92101-06012-03	BOLT FLANGE 6*12	1
F20	13					35010-AFAP-9000	SW COMP LOCK	1
F20	14					92501-06016-03	BOLT SPECIAL 6*16	2
F20	15					90006-F8-9000	TIE 250mm	5
F20	16					77240-AFAP-9000	SEAT CUSHION LOCKING WIRE	1
F20	17					93201-05008-03	SCREW PAN. M5*8	1
F20	18					92701-06012-02	BOLT FLANGE 6*12	2

F21 = BODY COMP FRAME

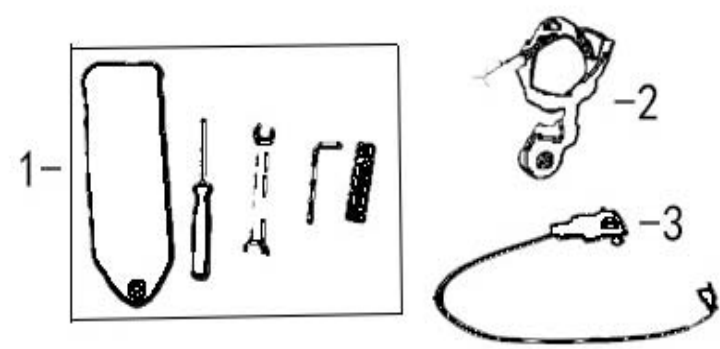
Page	Group					Code (U8)	Item	QTY
	Main	Sub-	Detail	Deta	Deta			
F21	1					50100-AFAP-A000	The frame	1
F21	2					50310-BLA5-9000	Front panel holder	1
F21	3					92101-06050-03	BOLT FLANGE 6*50	2
F21	4					95201-06000-03	NUT FLANGE 6MM	2
F21	5					50320-AFAP-9000	Fender bracket	1
F21	6					81200-AFAP-9000	Carrier (large)	1





F21	6				81200-AFAP-9100	Carrier (large) BIG	1
F21	7				92201-08020-03	BOLT FLANGE 8*20	2
F21	8				95801-08000-03	WANSHWE 8MM	3
F21	9				92201-08045-03	BOLT FLANGE 8*45	1
F21	10				5071A-AFAP-9000	pedal	1SET
F21	11				84707-ZNW-9000	Back plate holder	1
F21	12				92101-06016-03	BOLT FLANGE 6*16	2
F21	13				50350-AFAP-9000	BRKT ENG HANGER	1
F21	14				50352-F8-9000	RUBBER STOPPER	2
F21	15				92201-10055-03	BOLT FLANGE 10*55	2
F21	16				50356-F8-9000	BOLT ENG HANGER	1
F21	17				95401-10000-03	NUT U FLANGE 10MM	1
F21	18				50354-F8-9000	CAP ENG HANGER	2

F22 = RR BOX ASSY(SELECT) & full set of decals & full set of standard parts



Pa ge	Group					Code (U8)	Item	QTY
	Main	Sub-	Detail	Detail	Detail			
F22	1					89010-F8-9000	On-board tools	1
F22	2					88140-F8-9000	Single support flameout switch	1
F22	3					88210-AEA2-9000	USB charging interface	1
F22	/					10000-GY6F-9000	Engine	1
F22	/					1611K-AFA1-9000-A	CARBURETOR	1
F22	/					86000-00001	Full set of decals	1
F22	/					90000-00001	A full set of standard parts	1

F23 = EPA/DOT Special accessories

Pa	Group	Code (U8)	Item	QTY
----	-------	-----------	------	-----

ge	Main	Sub-	Detail	Deta	Deta	CODE (00)	ITEM	QTY
~	1					1880B-F8-A100	Carbon canister	1
~	2					18810-F8-8100-JL	Dumping valve	1
~	3					3515A-AAR8-A000	Right switch	1
~	4					3520A-B08-A100-D	Left switch	1
~	5					37200-BLA5-A000	Instrument (Miles and kilometers)	1
~	6					38400-F8-A000	Headlight controller	1
~	7					33741-F8-A000	Side reflector (red)	2
~	8					17500-AFAP-A000	Oil tank (vacuum)	1
~	9					8811A-FA7-A000	Rear view mirror (DOT)	1
~	10					18662-AFAP-9000	Make-up valve bracket	1
~	11					1830A-AFAP-A000	Muffler (with catalyst)	1
~	12					1611K-AFA1-9000-B	CARBURETOR	1
~	13					1865A-DGW-9000	combination valve	1
~	14					1768A-F22-A100	Oil filter inlet pipe 120mm	0.12m
~	15					1768C-F22-A200	Oil filter flowline 120mm	0.12m
~	16					1768G-ALA6-9100	Self-priming switch flowline 300 mm	0.3m
~	17					1768B-ALA2-A100	Negative pressure pipe 200mm	0.2m